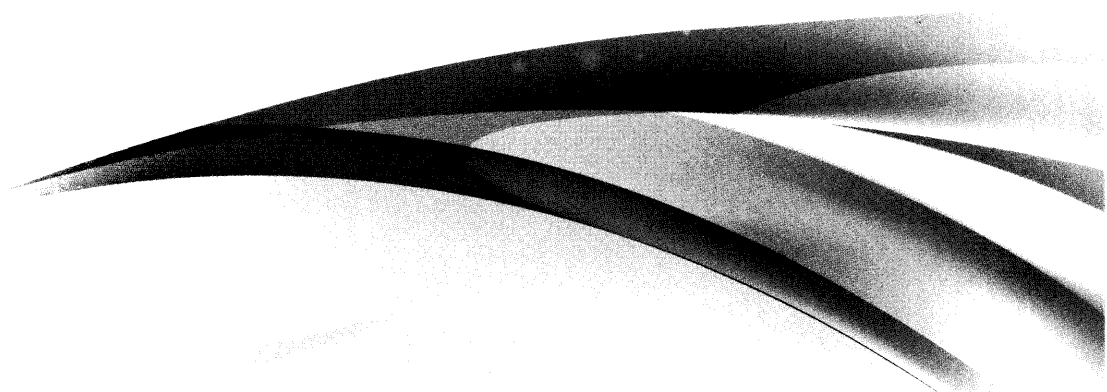


EAALY

EAALY HYDRAULIC VANE PUMPS



可變吐出量葉片泵

VPE.VPEA	P1
VPFE	P10
VPHE	P12
VVPE	P14
VGPE	P16

中壓可變吐出葉片泵

VDC-1A.2A	P18
VDC-C系列(卸載型)	P22
VDCG+PA	P25
VDC-雙聯	P27

定量吐出葉片泵

50T/150T	P29
FA1/FB1	P33

高壓定量吐出葉片泵

PV2R1/PV2R2	P35
PV2R12	P40

雙聯定量吐出葉片泵

50T+50T/PV2R1/PA/PB	P42
150T+50T/PV2R1/PV2R2/150T/PA/PB	P45
150F/150F+150F	P50

潤滑泵

VOP	P51
-----	-----

變量輪葉邦浦 VARIABLE DISPLACEMENT VANE PUMPS

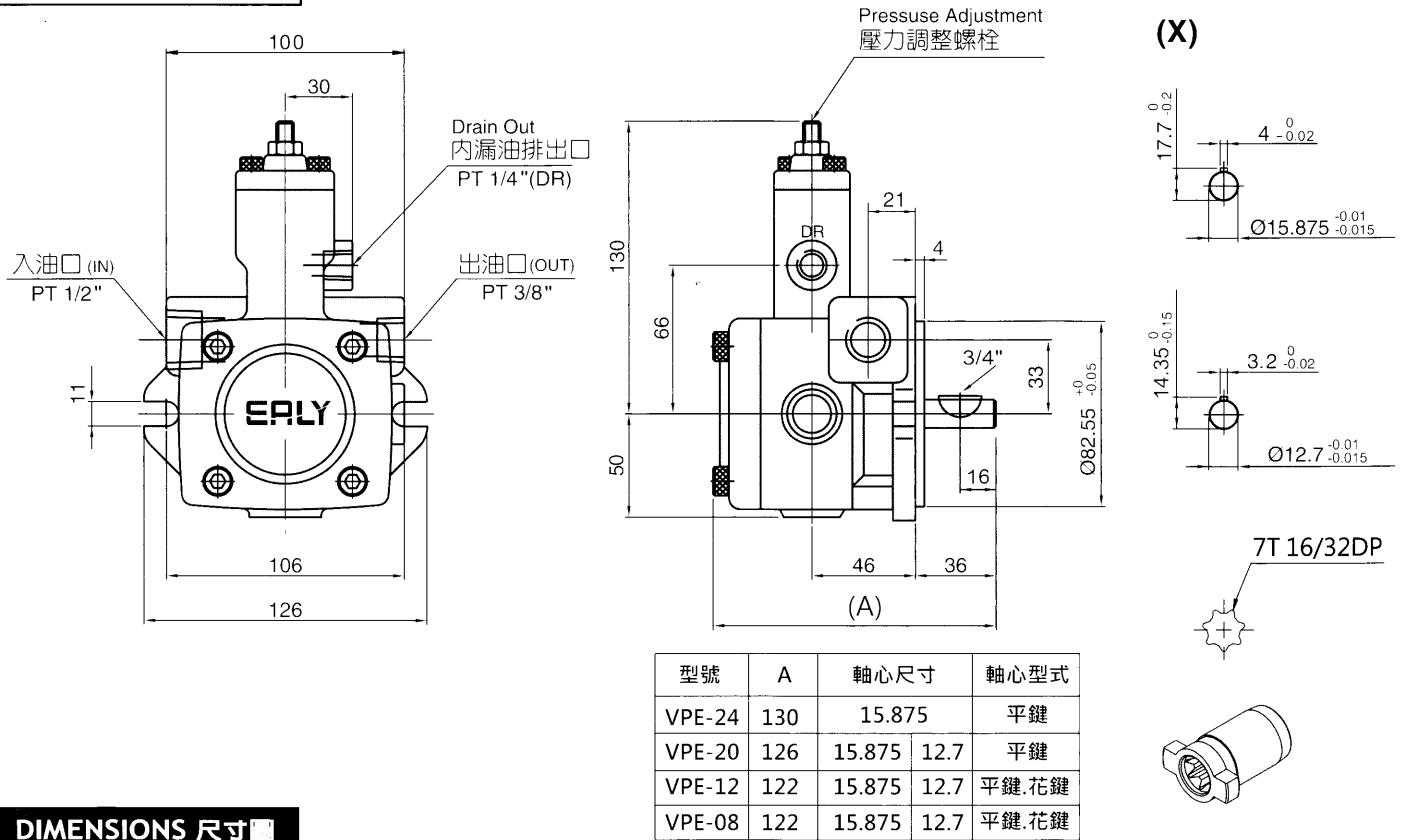
EALY ORBIT
www.ealy-orbit.com

DIMENSIONS 尺寸

VPE-08~24-10(平鍵)

VPE-08~12-7T(花鍵)

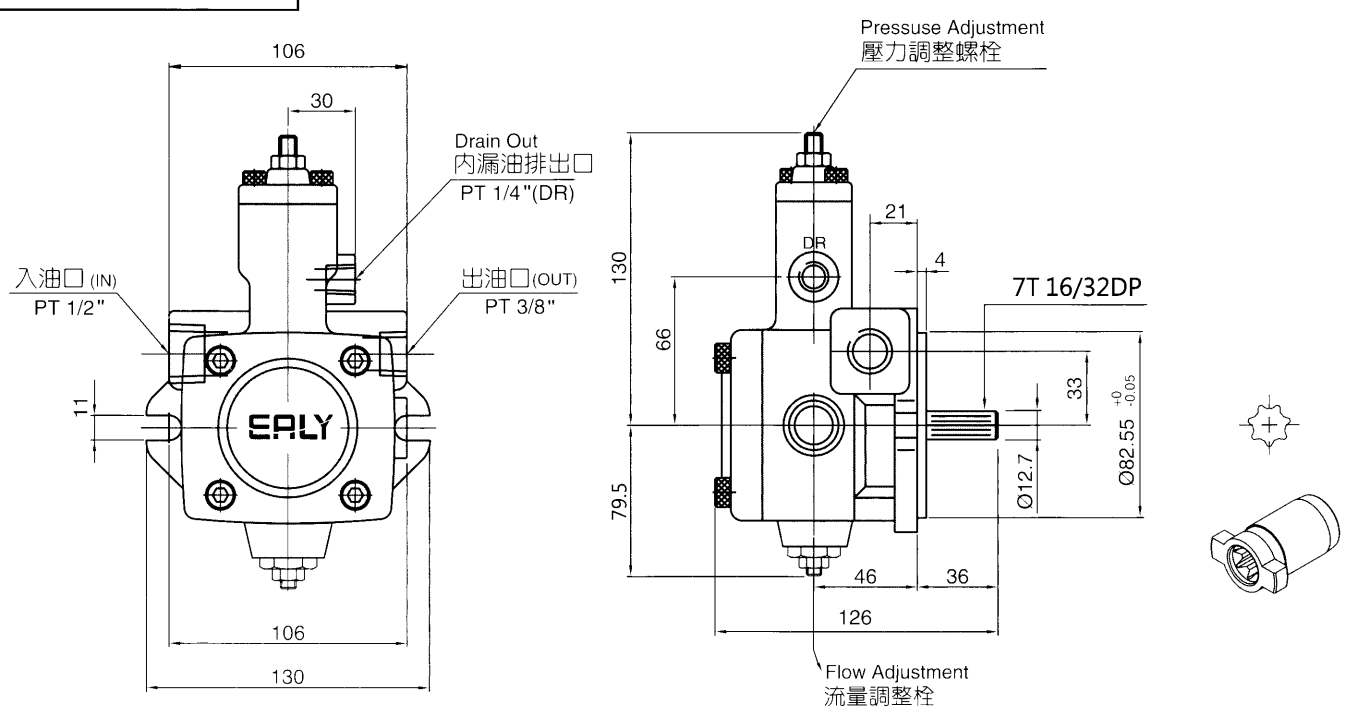
軸套: $\varnothing 20\text{mm}$



DIMENSIONS 尺寸

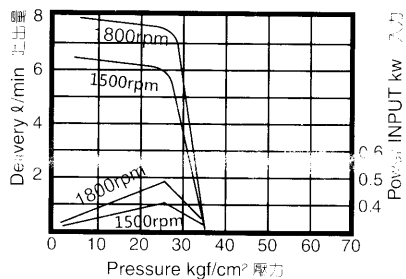
VPEA-15~20-7T(花鍵)

軸套: $\varnothing 20\text{mm}$

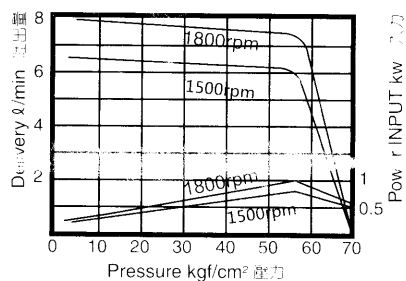


PERFORMANCE CURVEDIMENSIONS 性能曲線

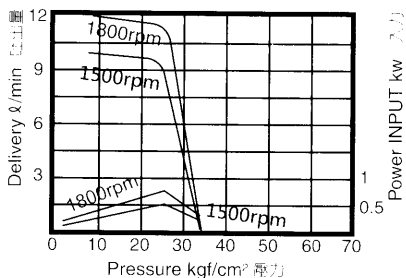
Series:VPE-F8※-10



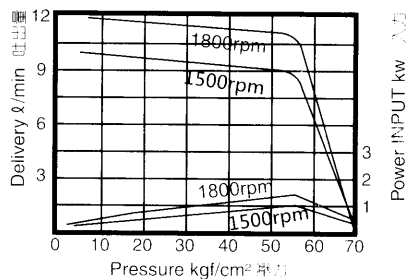
Series:VPE-F8※-10



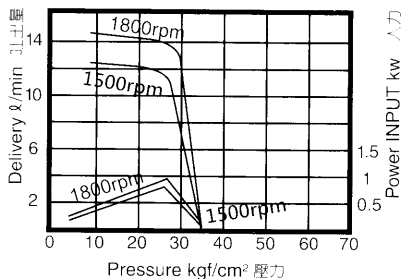
Series:VPE-F12※-10



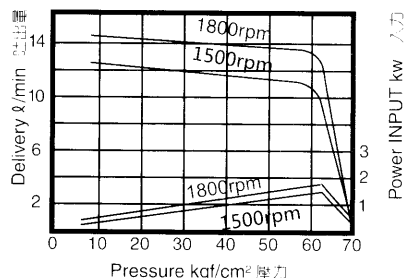
Series:VPE-F12※-10



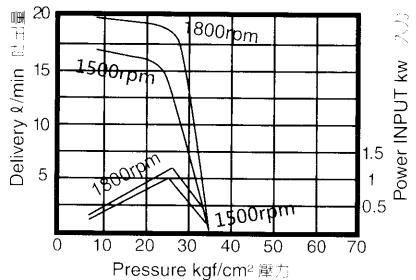
Series:VPE-F15※-10



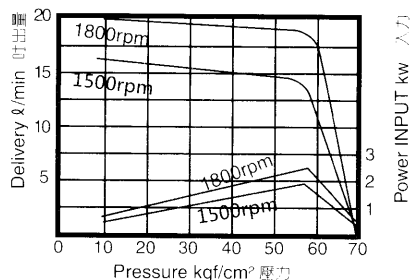
Series:VPE-F15※-10



Series:VPE-F20※-10



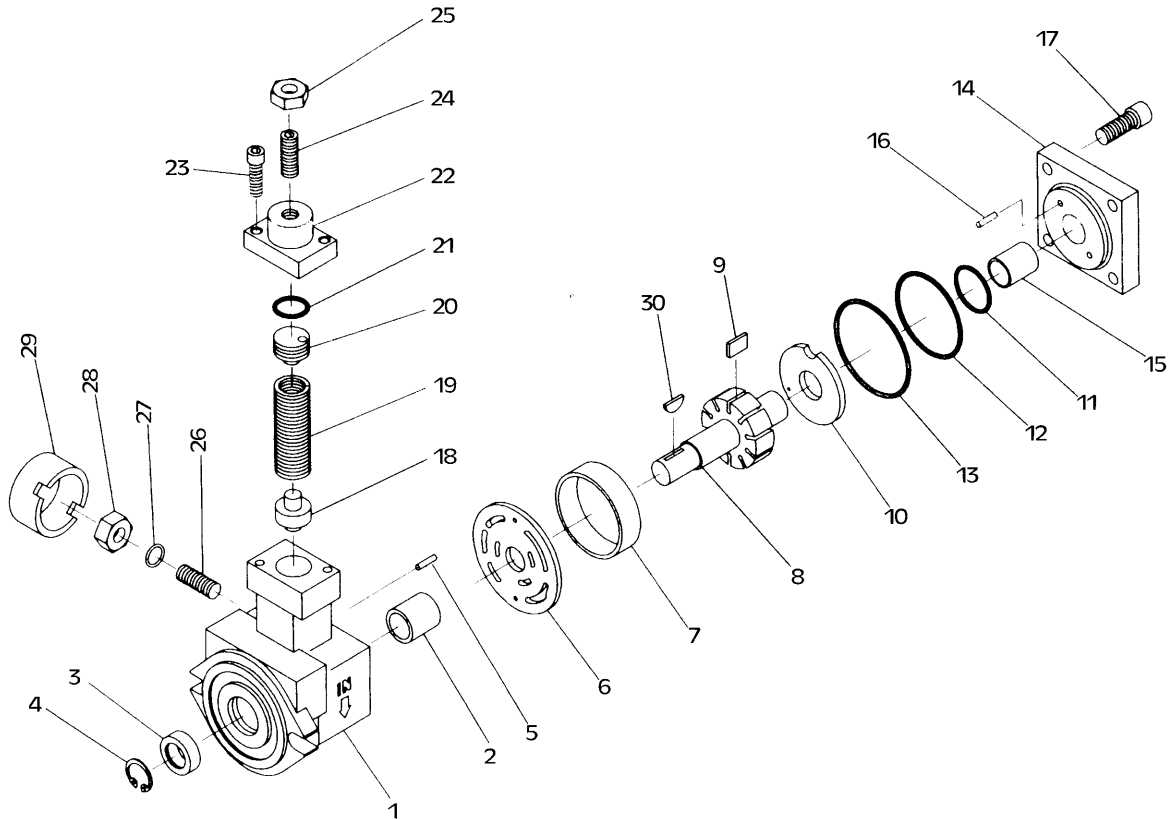
Series:VPE-F20※-10



變量輪葉邦浦 VARIABLE DISPLACEMENT VANE PUMPS

EALY ORBIT
www.ealy-orbit.com

DISASSEMBLY FIG 分解圖

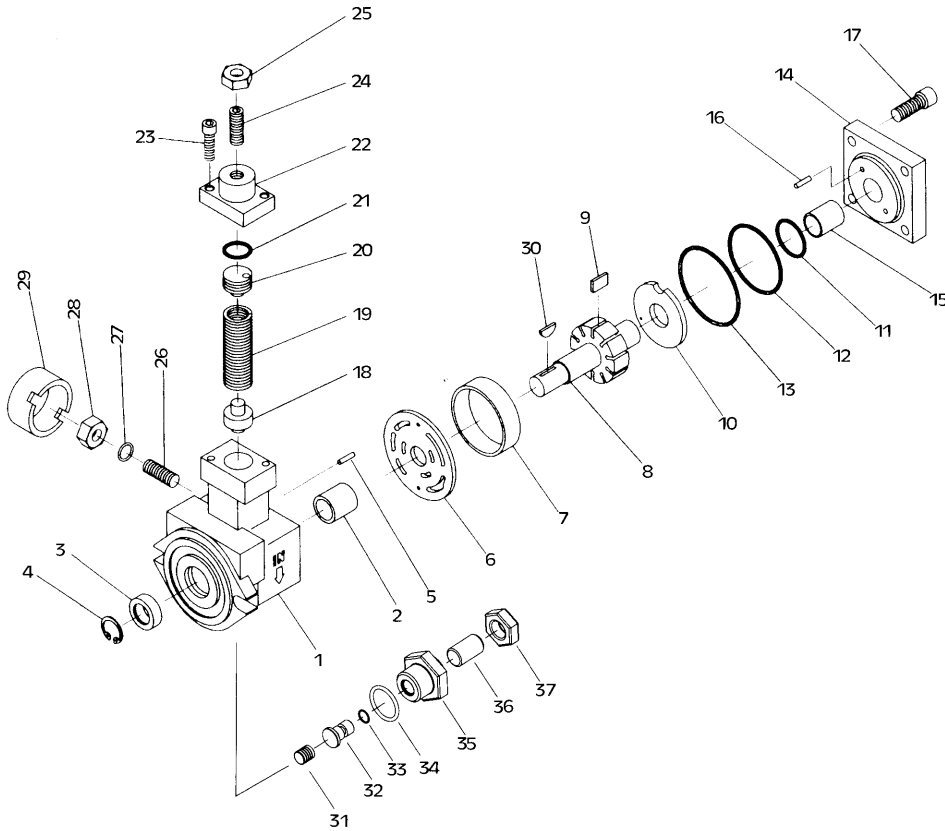


VPE- 零件表 PARTS LIST

項目 ITEM	內容 DESCRIPTION	數量 QUANTITY	附註 REMARKS
NO.1	Pump housing 邦本體	1	
NO.2	Dry bearing 無油軸承	1	17x15
NO.3	Oil seal 油封	1	17x35x7
NO.4	Retainer ring 扣環	1	R35
NO.5	Locking pin 定位梢	2	Ø3.0X8
NO.6	Front port plate 前分流板	1	
NO.7	Cam ring 凸輪環	1	
NO.8	Rotor 轉子	1	
NO.9	Vane 葉片	13	
NO.10	Rear port plate 後分流板	1	
NO.11	O ring O形環	1	2028
NO.12	O ring O形環	1	2045
NO.13	O ring O形環	1	2071
NO.14	End cover 端蓋	1	
NO.15	Dry bearings 無油軸承	1	17X15

項目 ITEM	內容 DESCRIPTION	數量 QUANTITY	附註 REMARKS
NO.16	Locking pin 定位梢	2	Ø3.0X8
NO.17	Countersink hex-screw 六角沉頭螺絲	4	M8X1.25X30
NO.18	Twin piston 雙頭活塞	1	
NO.19	Spring 彈簧	1	
NO.20	Snap plug 單頭活塞	1	
NO.21	O ring O形環	1	P20
NO.22	Top cover 上蓋	1	
NO.23	Countersink hex-screw 六角沉頭螺絲	2	M6X1.0X20
NO.24	Adjust bolt 調整螺栓	1	M10X1.5X35
NO.25	Screw nut 螺帽	1	M10X1.5
NO.26	Adjust bolt 調整螺栓	1	M12X1.0X28
NO.27	O ring O形環	1	P10
NO.28	Screw nut 螺帽	1	M12X1.5
NO.29	Snap cap 帽蓋	1	
NO.30	Woodruff key 半圓鍵	1	1/8" X 3/4"

DISASSEMBLY FIG 分解圖



VPEA- PARTS LIST 零件表

項目 ITEM	內容 DESCRIPTION	數量 QUANTITY	附註 REMARKS
1	Pump housing 邦本體	1	
2	Dry bearing 無油軸承	1	17x15
3	Oil seal 油封	1	17x35x7
4	Retainer ring 扣環	1	R35
5	Locking pin 定位梢	2	Ø3.0X8
6	Front port plate 前分流板	1	
7	Cam ring 凸輪環	1	
8	Rotor 轉子	1	
9	Vane 葉片	13	
10	Rear port plate 後分流板	1	
11	O ring O形環	1	2028
12	O ring O形環	1	2045
13	O ring O形環	1	2071
14	End cover 端蓋	1	
15	Dry bearings 無油軸承	1	17X15
16	Locking pin 定位梢	2	Ø3.0X8
17	Countersink hex-screw 六角沉頭螺絲	4	M8X1.25X30
18	Twin piston 雙頭活塞	1	
19	Spring 彈簧	1	

項目 ITEM	內容 DESCRIPTION	數量 QUANTITY	附註 REMARKS
20	Snap plug 單頭活塞	1	
21	O ring O形環	1	P20
22	Top cover 上蓋	1	
23	Countersink hex-screw 六角沉頭螺絲	2	M6X1.0X20
24	Adjust bolt 調整螺柱	1	M10X1.5X35
25	Screw nut 螺帽	1	M10X1.5
26	Adjust bolt 調整螺柱	1	M12X1.0X28
27	O ring O形環	1	P10
28	Screw nut 螺帽	1	M12X1.5
29	Snap cap 帽蓋	1	
30	Woodruff key 半圓鍵	1	1/8" X 3/4"
31	Piston 活塞	1	
32	Plunger 柱塞	1	
33	O ring O形環	1	P5
34	O ring O形環	1	P18
35	Plug screw 塞頭螺絲	1	
36	Adjust bolt 調整螺柱	1	M12x1.75x20
37	Screw nut 螺帽	1	M12x1.75x7

變量輪葉邦浦 VARIABLE DISPLACEMENT VANE PUMPS

**EALY
ORBIT**
www.ealy-orbit.com



FEATURES:

- Save horse power and low noise level.
- Wear and heat resistance.
- High volumn efficiency.
- Smooth running and stable operation particular suitable for machine tools and single-purple machines.

特點:

- 省馬力、低噪音。
- 不易生熱、耐磨耗。
- 高容積效率。
- 運轉圓滑、作動穩定，特別適用工作機械、專用機械。

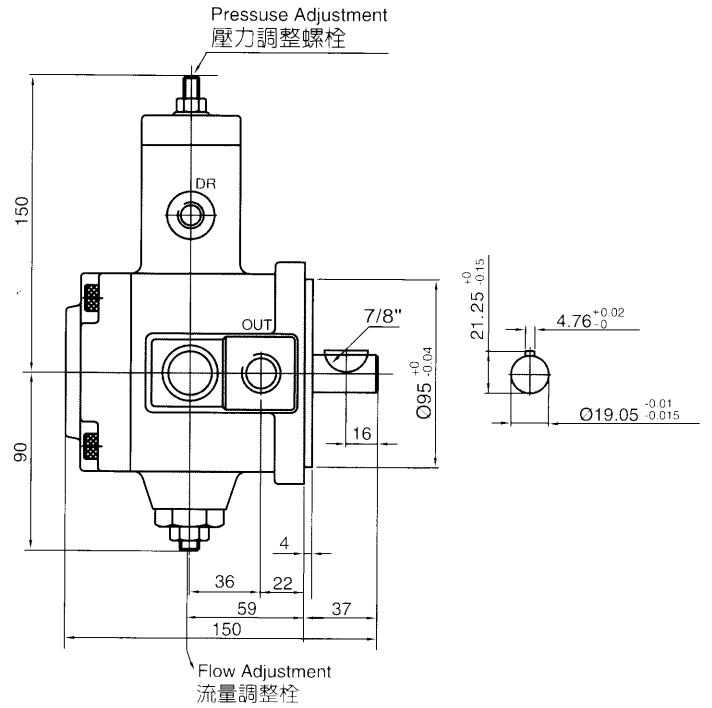
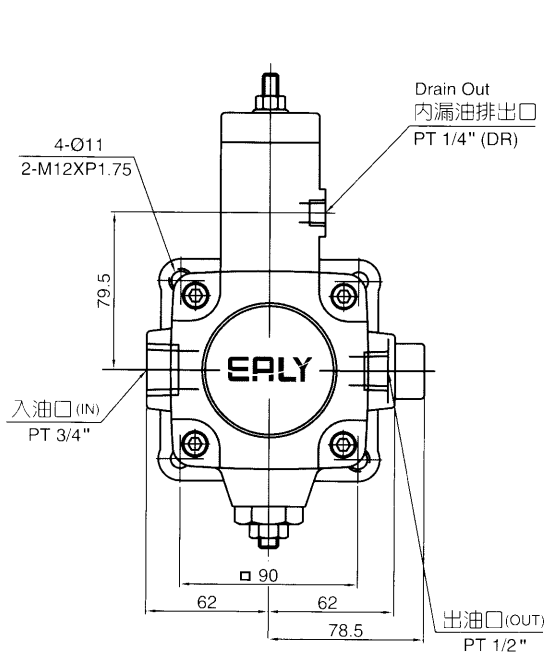
Series:VPE

MODEL 型號	Mounting 安裝方式	No-load delivery l/min (1800rpm) 無負載容量	Adjusting pressure range kgf/cm ² 壓力調整範圍	Design number 設計號碼	WEIGHT kgf (lbs) 重量	
					F: 法蘭型	L: 腳座型
VPE -	※	※	※	- ※		
VPE -	F: Flange 法蘭型	25	A: 08~18 kgf/cm ² B: 15~35 kgf/cm ² C: 30~55 kgf/cm ² D: 50~70 kgf/cm ²	10: 平鍵 9T: 花鍵	9.1kg	12.3kg
		30				
	L: FOOT 腳座型	35				
		40				
		47		10: 平鍵		

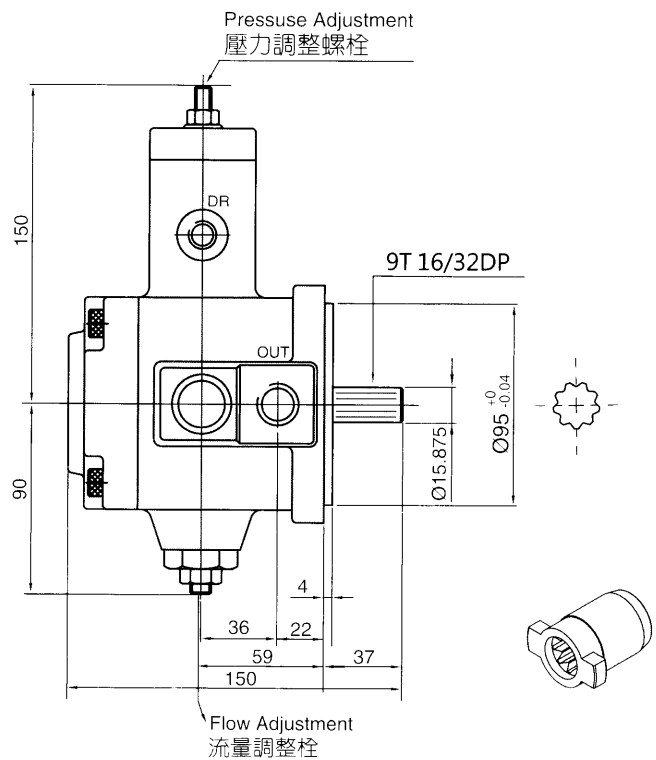
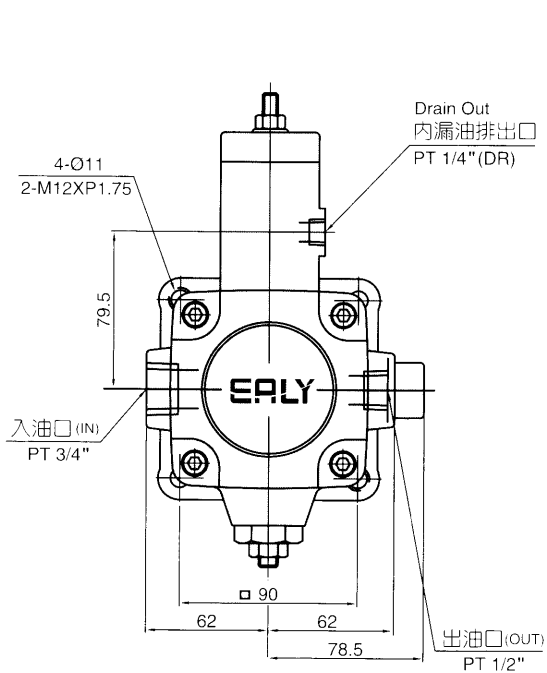
最高轉數(Speed MAX):1800r/min

最低轉數(Speed MIN): 800r/min

DIMENSIONS 尺寸圖
VPE-25~47-10(平鍵)



DIMENSIONS 尺寸圖
VPE-25~47-9T(花鍵)
軸套: Ø 24mm

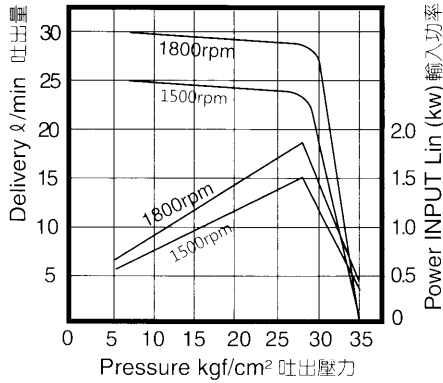


變量輪葉邦浦 VARIABLE DISPLACEMENT VANE PUMPS

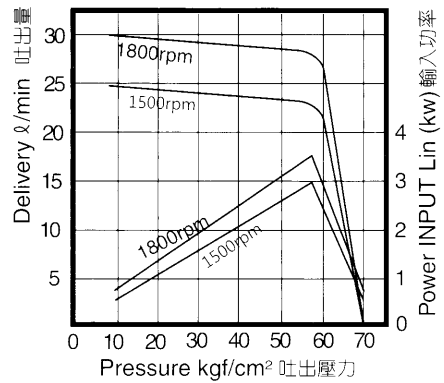


PERFORMANCE CURVEDIMENSIONS 性能曲線

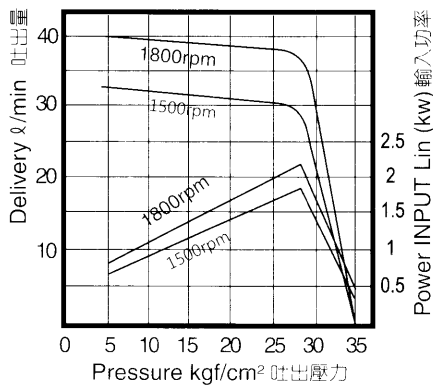
Series:VPE-F30※-10



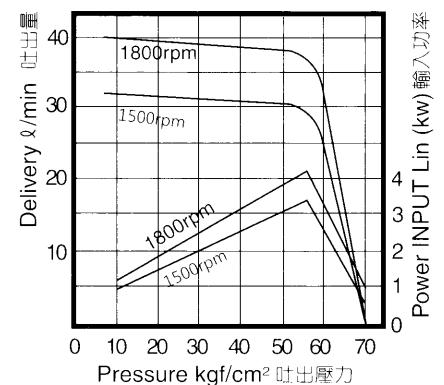
Series:VPE-F30※-10



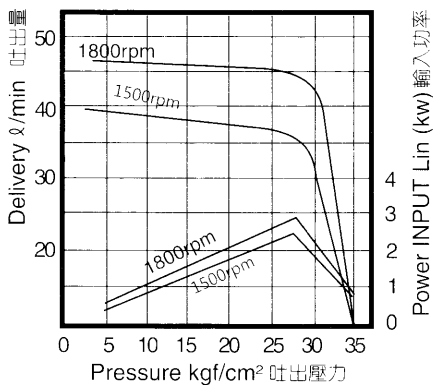
Series:VPE-F40※-10



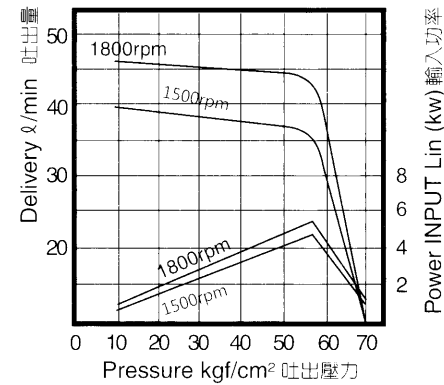
Series:VPE-F40※-10



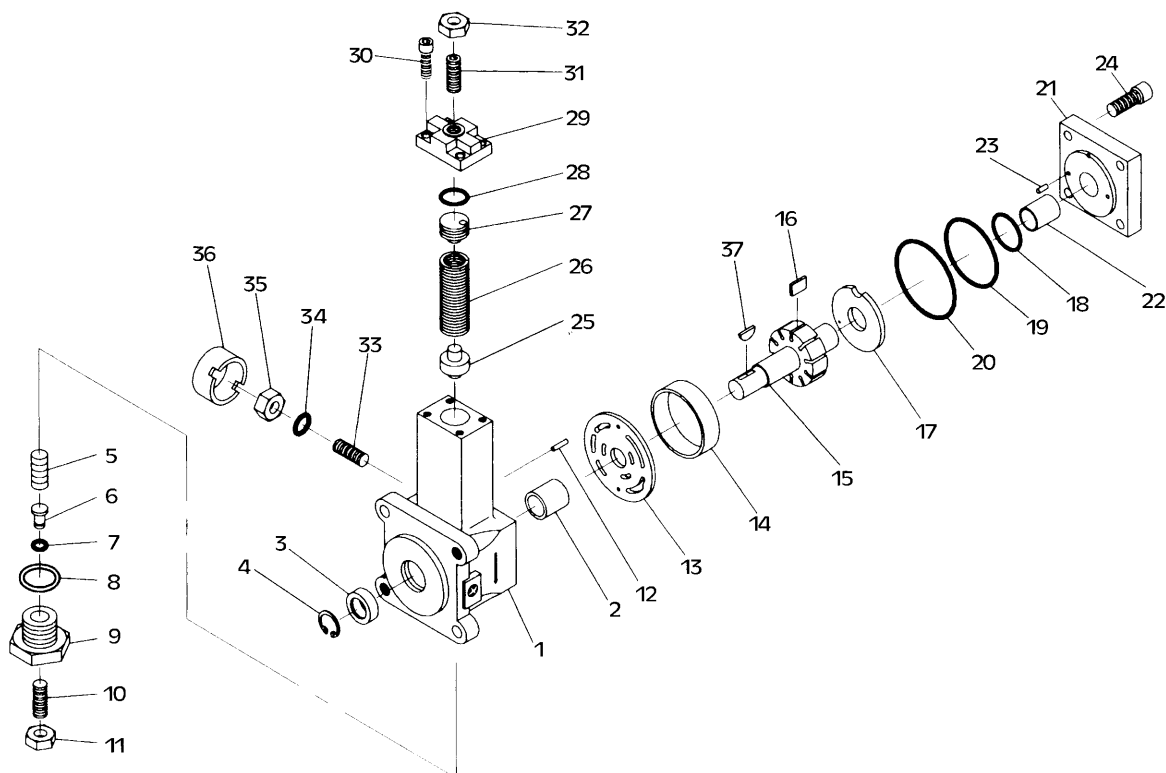
Series:VPE-F47※-10



Series:VPE-F47※-10



DISASSEMBLY FIG 分解圖



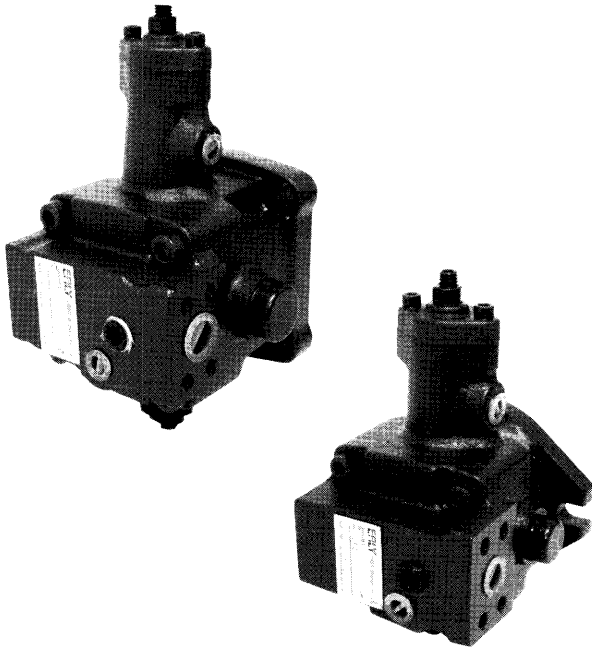
PARTS LIST 零件表

項目 ITEM	內容 DESCRIPTION	數量 QUANTITY	附註 REMARKS
NO.1	Pump housing 邦本體	1	
NO.2	Dry bearing 無油軸承	1	DD22x25
NO.3	Oil seal 油封	1	22x42x11
NO.4	Retainer ring 扣環	1	R42
NO.5	Piston 活塞	1	
NO.6	Plunger 柱塞	1	
NO.7	O ring O形環	1	P5
NO.8	O ring O形環	1	P20
NO.9	Plug screw 塞頭螺絲	1	
NO.10	Adjust bolt 調整螺栓	1	M12x1.75x20
NO.11	Screw nut 螺帽	1	M12x1.75x7
NO.12	Locking pin 定位梢	2	ø4.0x10
NO.13	Front port plate 前分流板	1	
NO.14	Cam ring 凸輪環	1	
NO.15	Rotor 轉子	1	
NO.16	Vane 葉片	13	
NO.17	Rear port plate 後分流板	1	
NO.18	O ring O形環	1	2040
NO.19	O ring O形環	1	2059

項目 ITEM	內容 DESCRIPTION	數量 QUANTITY	附註 REMARKS
NO.20	O ring O形環	1	2085
NO.21	End cover 端蓋	1	
NO.22	Dry bearings 無油軸承	1	DD22x25
NO.23	Locking pin 定位梢	2	Ø4.0x10
NO.24	Countersink hex-screw 六角沉頭螺絲	4	M10x1.5x25
NO.25	Twin piston 雙頭活塞	1	
NO.26	Spring 彈簧	1	
NO.27	Snap plug 單頭活塞	1	
NO.28	O ring O形環	1	P22A
NO.29	Top cover 上蓋	1	
NO.30	Countersink hex-screw 六角沉頭螺絲	4	M6x1.0x20
NO.31	Adjust bolt 調整螺栓	1	M10x1.5x35
NO.32	Screw nut 螺帽	1	M10x1.5
NO.33	Adjust bolt 調整螺栓	1	M16x1.0x36
NO.34	O ring O形環	1	P14
NO.35	Screw nut 螺帽	1	M16x1.0
NO.36	Snap cap 帽蓋	1	
NO.37	Woodruff key 半圓鍵	1	3/16" X 7/8"

變量輪葉邦浦 VARIABLE DISPLACEMENT VANE PUMPS

**EALY
ORBIT**
www.ealy-orbit.com



FEATURES:

- Save horse power and low noise level.
- Wear and heat resistance.
- High volumn efficiency.
- Smooth running and stable operation particular suitable for machine tools and single-purple machines.

特點:

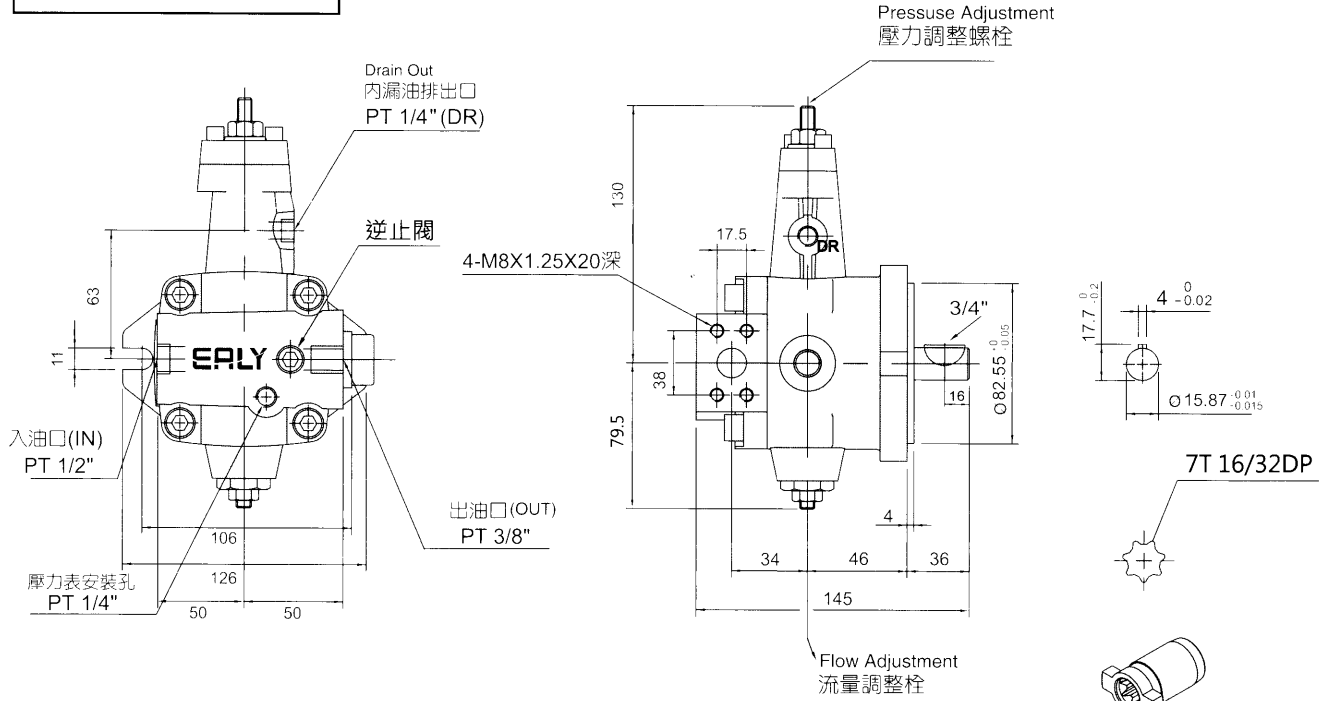
- 省馬力、低噪音。
- 不易生熱、耐磨耗。
- 高容積效率。
- 運轉圓滑、作動穩定，特別適用工作機械、專用機械。

Series: VPFE

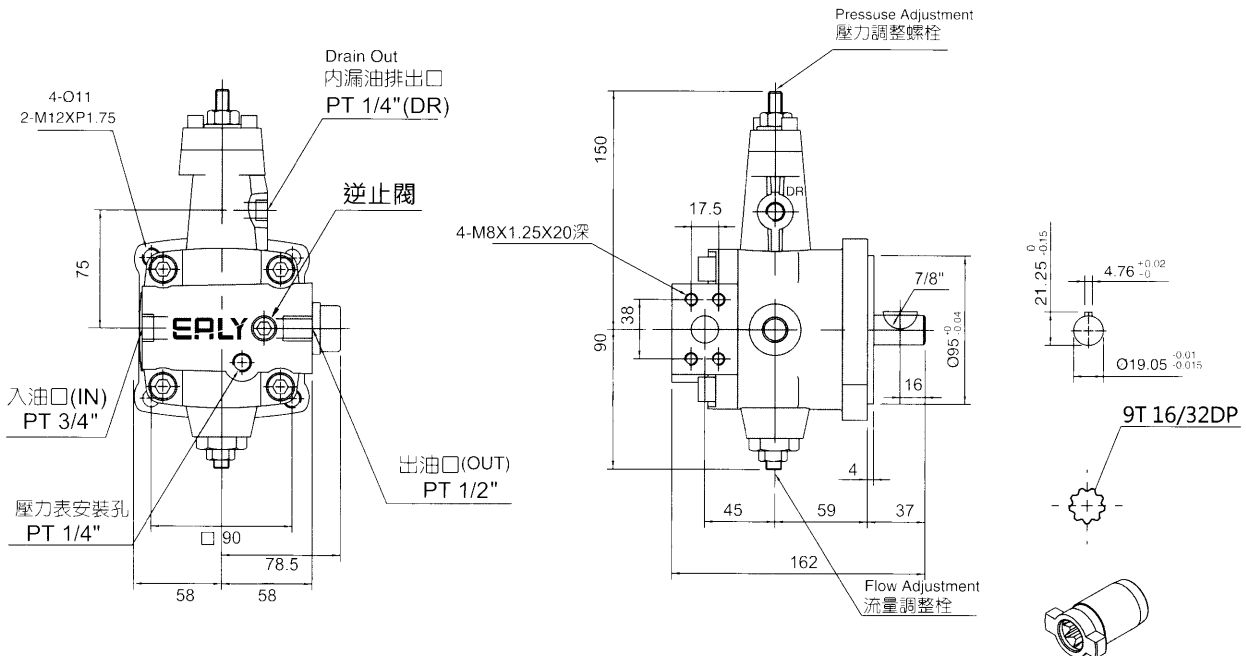
MODEL 型號	Mounting 安裝方式	No-load delivery l /min (1800rpm) 無負載容量	Adjusting pressure range kgf/cm ² 壓力調整範圍	Design number 設計號碼	WEIGHT kgf (lbs) 重量	
					F: 法蘭型	L: 腳座型
VPFE -	F	※	※	- ※		
VPFE -	F: Flange 法蘭型	12	A: 08~18 kgf/cm ² B: 15~35 kgf/cm ² C: 30~55 kgf/cm ² D: 50~70 kgf/cm ²	10: 平鍵	6.3kg	/
		15		7T: 花鍵		
		20				
		25		10: 平鍵		
		30		9T: 花鍵		
35						
40						
47	10: 平鍵		9kg			

最高轉數(Speed MAX): 1800r/min
最低轉數(Speed MIN): 800r/min

DIMENSIONS 尺寸	
VPFE-12~20-10(平鍵)	
VPFE-12~20-7T(花鍵)	
軸套: Ø20mm	

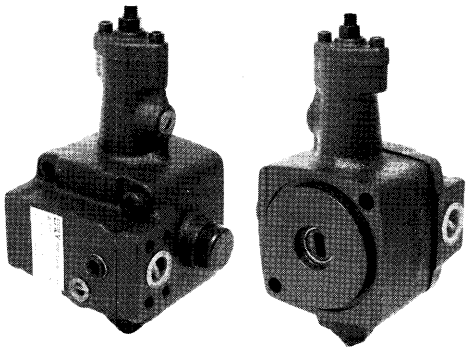


DIMENSIONS 尺寸	
VPFE-25~47-10(平鍵)	
VPFE-25~40-9T(花鍵)	
軸套: Ø24mm	



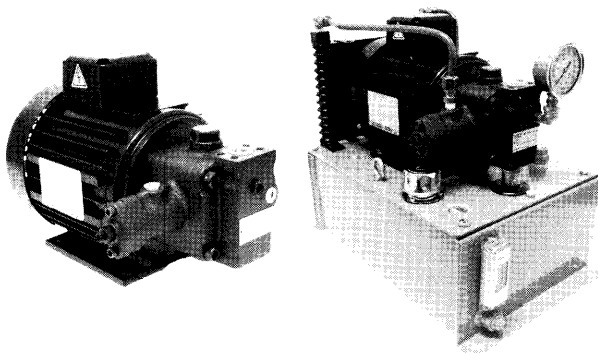
變量輪葉邦浦 VARIABLE DISPLACEMENT VANE PUMPS

EALY ORBIT
www.ealy-orbit.com



FEATURES:

- Save horse power and low noise level.
- Wear and heat resistance.
- High volumn efficiency.
- Smooth running and stable operation particular suitable for machine tools and single-purpe machines.



特點:

- 省馬力、低噪音。
- 不易生熱、耐磨耗。
- 高容積效率。
- 運轉圓滑、作動穩定，特別適用工作機械、專用機械。

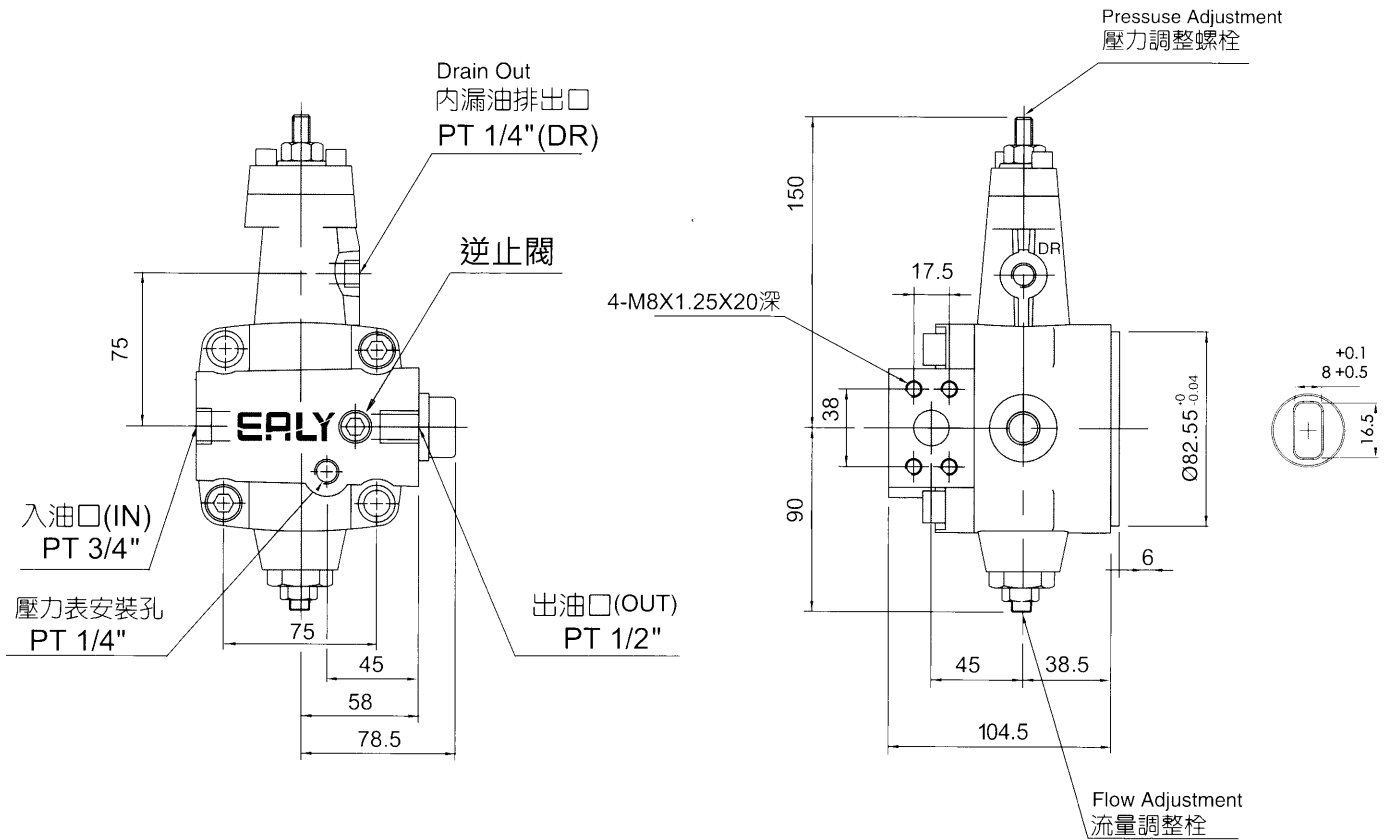
Series: VPHE

MODEL 型號	Mounting 安裝方式	No-load delivery l/min (1800rpm) 無負載容量	Adjusting pressure range kgf/cm ² 壓力調整範圍	Design number 設計號碼	WEIGHT kgf (lbs) 重量	
					F: 法蘭型	L: 腳座型
VPHE-	-F	※	※	- ※		
VPHE-	F: Flange 法蘭型	18 25 30 35 40	A: 08~18 kgf/cm ² B: 15~35 kgf/cm ² C: 30~55 kgf/cm ² D: 50~70 kgf/cm ²	-10	7.6kg	

最高轉數(Speed MAX):1800r/min
最低轉數(Speed MIN): 800r/min

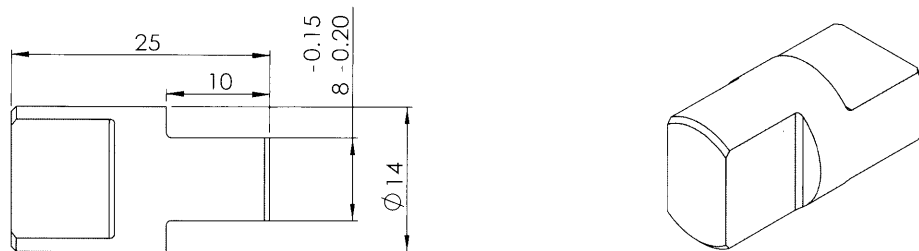
DIMENSIONS 尺寸圖

VPHE



DIMENSIONS 尺寸圖

VPHE - 聯軸器



雙連變量邦浦 DOUBLE VARIABLE VANE PUMPS

EALY ORBIT
www.ealy-orbit.com



FEATURES:

- Double variable displacement vane pumps built into one single body, with a common driving shaft enable driving two independent pumps to produce two branches of oil flow system which avoid to interfere each other.
- Requires only one single-shaft, uses single electric motor.
- Space saving for easier installation and maintenance.
- Closed circuit to achieve lower level.

特點:

- 雙連變量邦浦可以組合成二個獨立而分離的油路系統，避免相互牽制。
- 共用同一軸心，使用同一馬達。
- 減少使用空間，配管維修容易。
- 採用密閉迴路可以降低噪音。

Series: VVPE

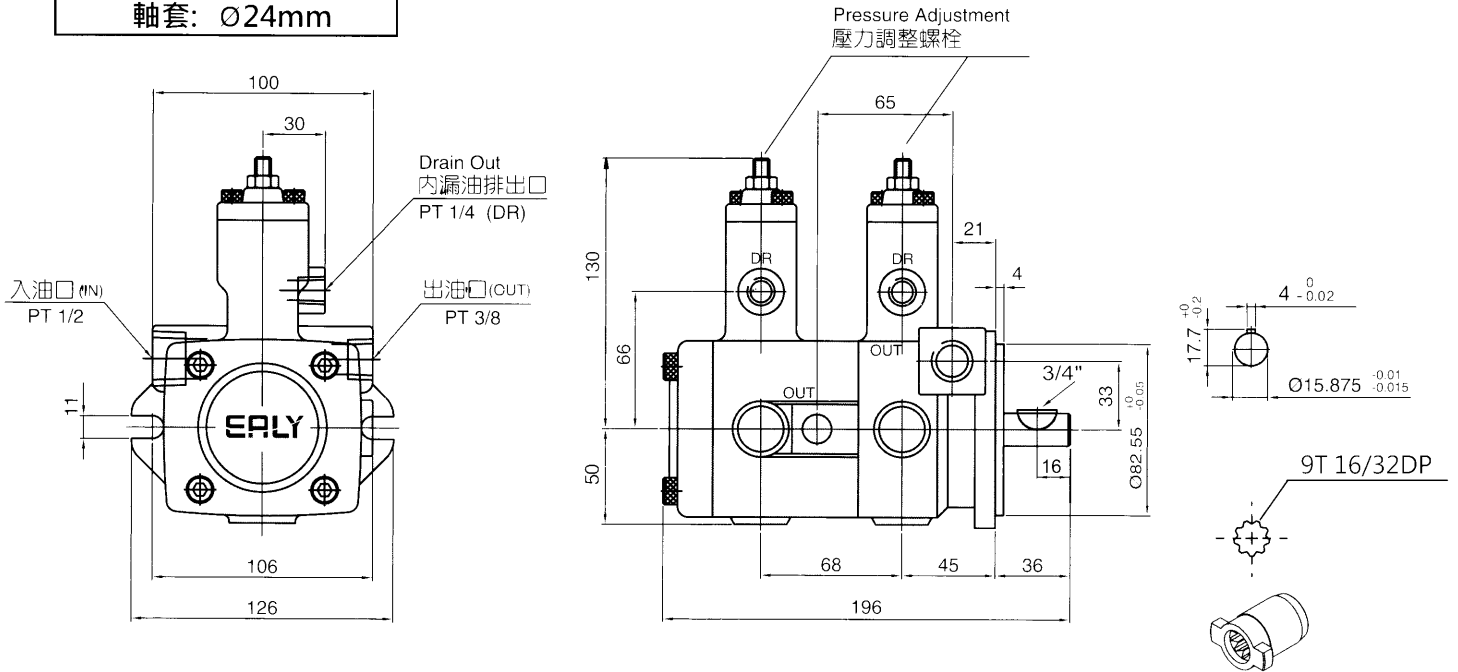
MODEL 型號	Mounting 安裝方式	No-load delivery 無負載容量		No-load delivery 無負載容量		Design number 設計號碼
		Shaft side 1800 rpm	Max. pressure 最高壓力	Cover side 1800 rpm	Max. pressure 最高壓力	
VVPE -	✳	✳	✳	+ ✳	✳	- ✳
VVPE -	F: Flange 法蘭型	8	A: 08~18 kgf/cm ² B: 15~35 kgf/cm ² C: 30~55 kgf/cm ² D: 50~70 kgf/cm ²	8	A: 08~18 kgf/cm ² B: 15~35 kgf/cm ² C: 30~55 kgf/cm ² D: 50~70 kgf/cm ²	10: 平鍵 9T: 花鍵
		12		12		
		15		15		
		20		20		
	L: FOOT 腳座型	25	25			
		30	30			
		35	35			
		40	40			
		47	47			

重量	容量	08~24	25~47
WEIGHT kgf (lbs) 重量	F: 法蘭型	9.2kg	15.7kg
	L: 腳座型	10.7kg	18.8kg

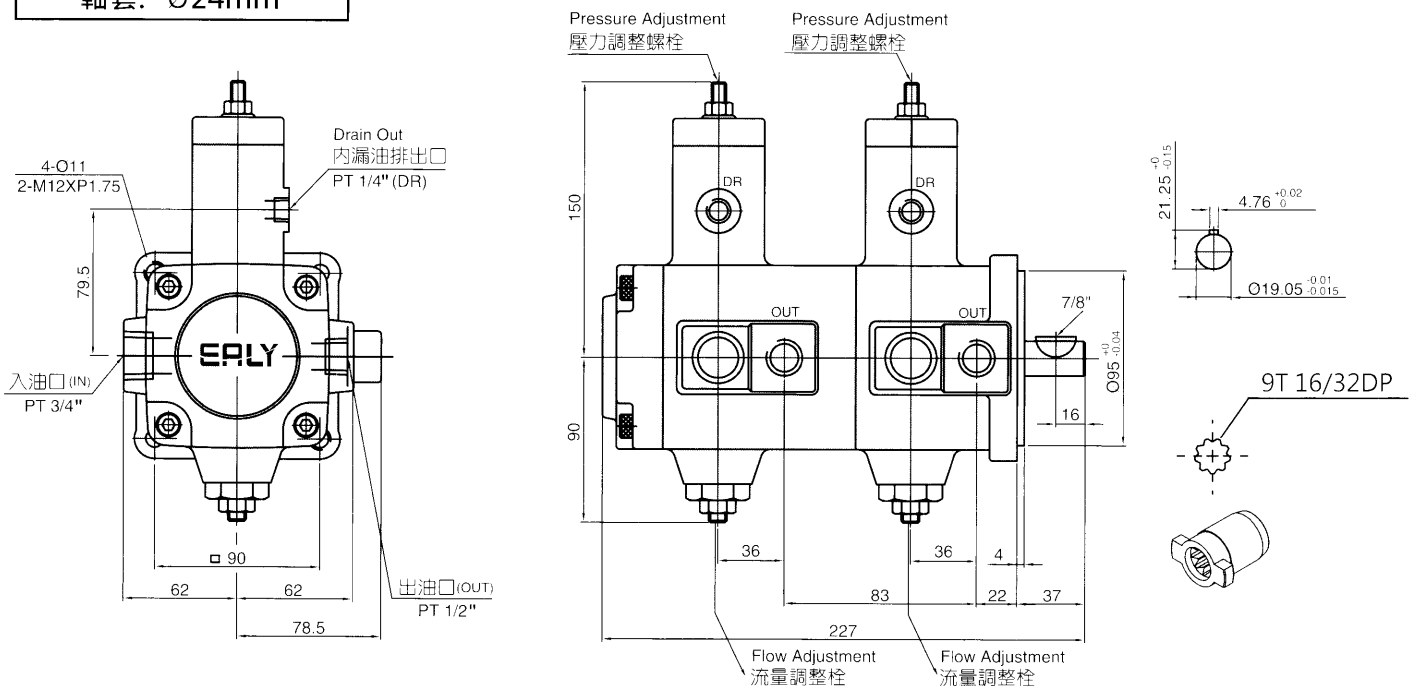
最高轉數(Speed MAX): 1800r/min
最低轉數(Speed MIN): 800r/min

雙連變量邦浦 DOUBLE VARIABLE VANE PUMPS

DIMENSIONS 尺寸	
VVPE-08~20-10(平鍵)	
VVPE-08~20-9T(花鍵)	
軸套: Ø24mm	

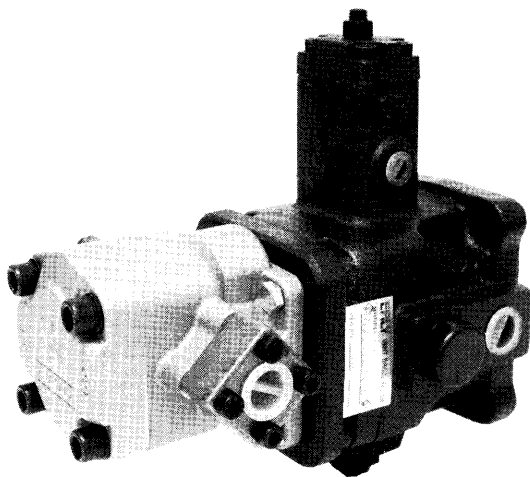


DIMENSIONS 尺寸	
VVPE-25~47-10(平鍵)	
VVPE-25~47-9T(花鍵)	
軸套: Ø24mm	



變量輪葉邦浦+齒輪邦浦 VARIABLE VANE PUMPS + GEAR PUMPS

**EALY
ORBIT**
www.ealy-orbit.com



FEATURES:

- The system design engineers a low cost, high working pressure, simple structure, easily-maintain and installation.
- High flow capacity and saving horsepower and small size provide economic space.
- Maximum working pressure 210kgf/cm²(3000psi).
- Low noise level, endurance and heat generated is much less.
- Variable displacement pump and gear pump one are assembled with the same shaft directly.

特點:

- 低價位、高壓力、結構簡單、配管維修容易。
- 大流量、省馬力、體積小，可節省空間。
- 最高工作壓力210kgf/cm² (3000psi)。
- 低噪音、不易生熱、耐麼耗。
- 變量幫與gear pump採取直結式同一軸心組合。

Series:VGPE+PA

MODEL 型號	Mounting 安裝方式	No-load delivery l/min (1800rpm) 無負載容量	Adjusting pressure range kgf/cm ² 壓力調整範圍	Gear pump 齒輪泵	Design number 設計號碼
VGPE-	※	※	※	- PA	- ※
VGPE-	F:Flange 法蘭型	25	A:8~18 kgf/cm²	HGP-2A 2~12	10:平鍵
		30	B:15~35 kgf/cm²		
	L:FOOT 腳座型	35	C:30~55 kgf/cm²		9T:花鍵
		40	D:50~70 kgf/cm²		
	47		10:平鍵		

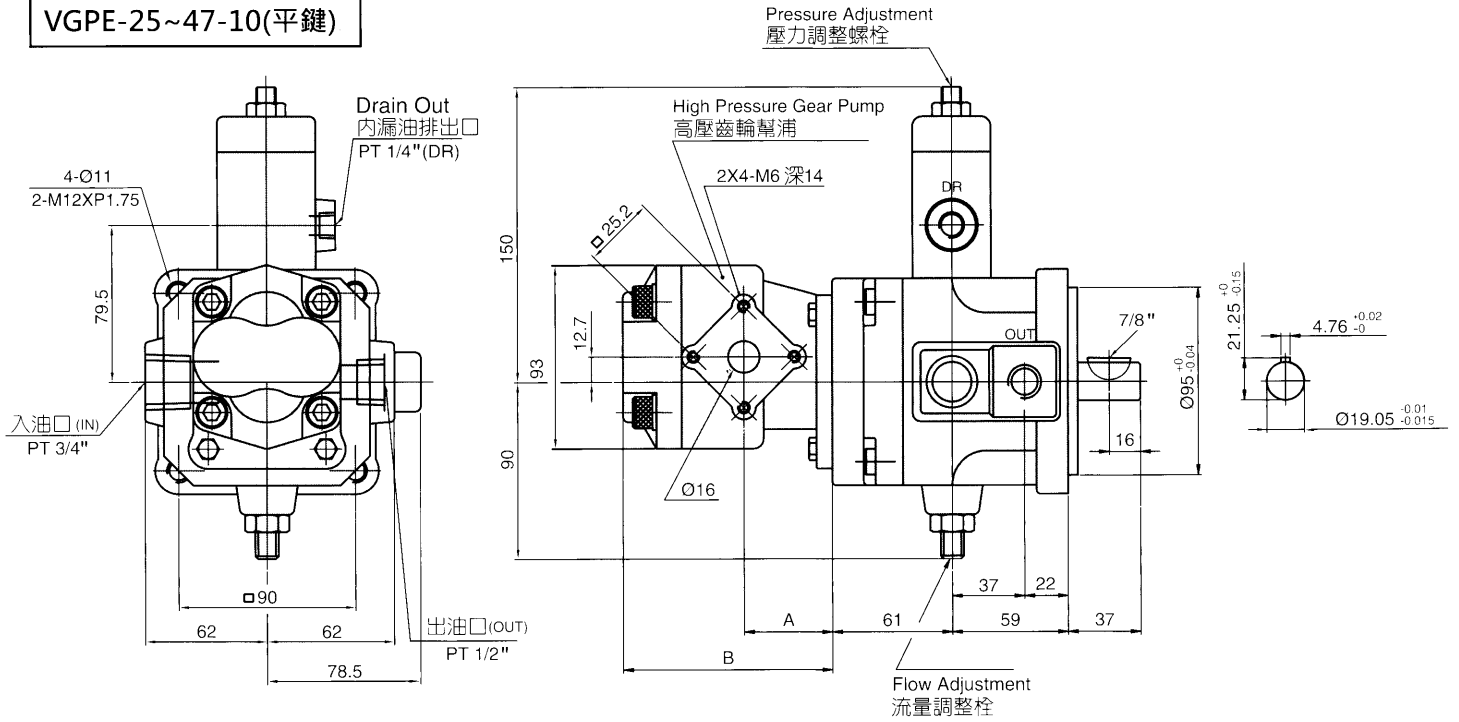
重量	型號	VGPE
WEIGHT kgf (lbs) 重量	F: 法蘭型	9.3kg
	L: 腳座型	12.5kg

- ※ 重量不含後端齒輪泵
- ※ 齒輪泵軸心 12.5mm
- ※ 最高轉數(Speed MAX):1800r/min
最低轉數(Speed MIN): 1000r/min

變量輪葉邦浦+齒輪邦浦 VARIABLE VANE PUMPS + GEAR PUMPS

DIMENSIONS 尺寸圖

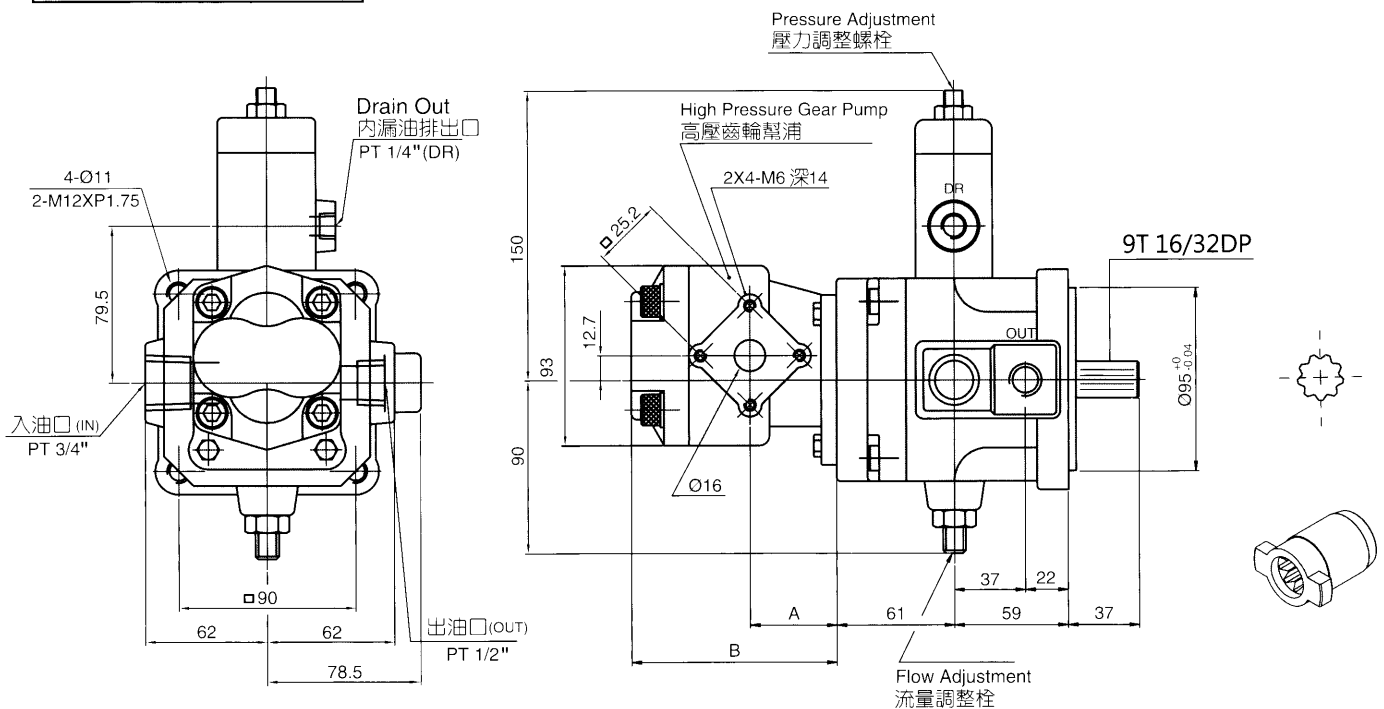
VGPE-25~47-10(平鍵)



DIMENSIONS 尺寸圖

VGPE-25~40-9T(花鍵)

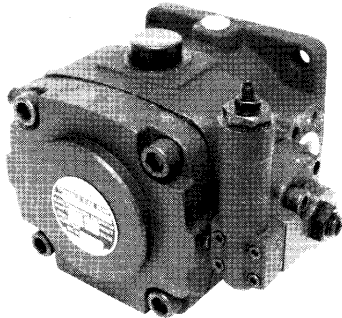
軸套: Ø24mm



中壓變容量輪葉邦浦 MEDIUM-PRES. VARIABLE DISPLACEMENT VANE PUMPS



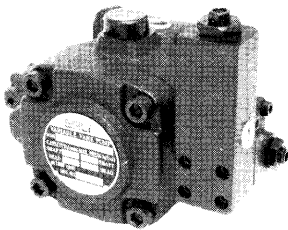
VDC-2A



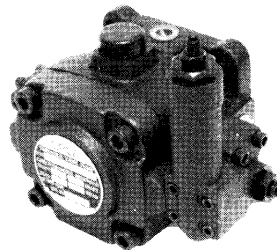
FEATURES:

- High efficiency, stabilize when high pressure operation.
- Low unpleasant noise, low vibration.
- Instant response for start and stop changing operation.
- Output flow stabilize with high pressure.
- High efficiency operation with low motor power-loss.
- Easy operation for pressure and flow adjustment.

VDC-1B



VDC-1A



特點:

- 高效率、高壓運轉、性能穩定。
- 無振動、低噪音。
- 應答性高，啟動、停止負荷變動，動作靈敏。
- 高壓時，吐出量穩定。
- 馬力損失小，運轉效率高。
- 壓力、流量調整容易，操作簡單。

Series:VDC

MODEL 型號	Adjustable type 調壓型式	Mounting 安裝方式	No-load delivery l/min (1800rpm) 無負載容量	Adjusting pressure range kgf/cm ² 壓力調整範圍	Design number 設計號碼
VDC-*	✳	- ✳	✳	✳	- ✳
VDC-1	Normal A:規格品 Addition B:外接型	F:Flange 法蘭型 L:FOOT 腳座型	20	A: 15~35 kgf/cm ² B: 20~70 kgf/cm ² C: 50~105 kgf/cm ² D: 70~140 kgf/cm ²	20:平鍵 9T:花鍵
			25		
			30		
			40		
VDC-2	Unload C:卸載型	L:FOOT 腳座型	54	最高壓力:105kgf/cm ² 最高壓力: 70 kgf/cm ²	20:平鍵
			70		
			86		

重量	型號	VDC-1A	VDC-2A
WEIGHT kgf (lbs) 重量	F: 法蘭型	10.3kg	26.1kg
	L: 腳座型	13.5kg	32.8kg

最高轉數(Speed MAX):1800r/min
最低轉數(Speed MIN): 800r/min

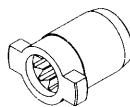
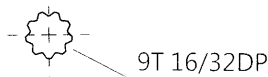
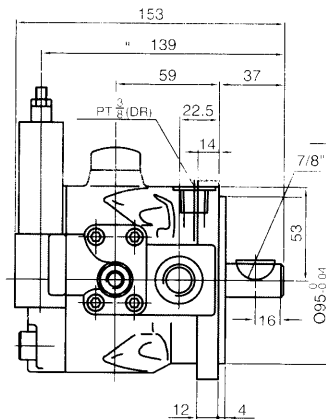
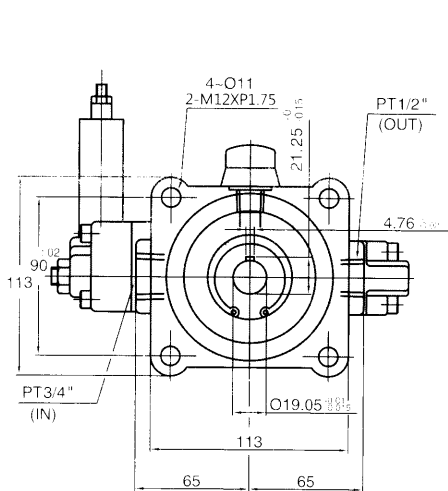
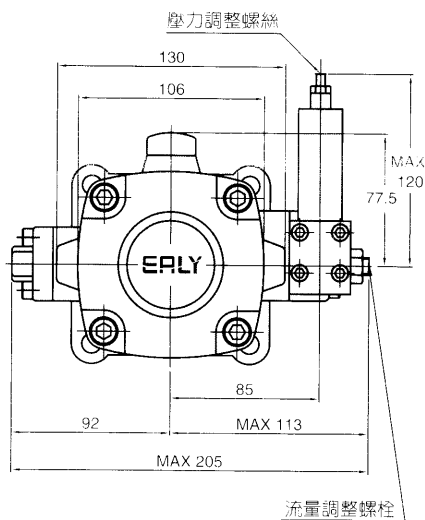
中壓變容量輪葉邦浦 MEDIUM-PRES. VARIABLE DISPLACEMENT VANE PUMPS

DIMENSIONS 尺寸

VDC-1A-20~40-20(平鍵)

VDC-1A-20~40-9T(花鍵)

軸套: $\varnothing 24\text{mm}$

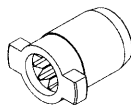
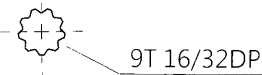
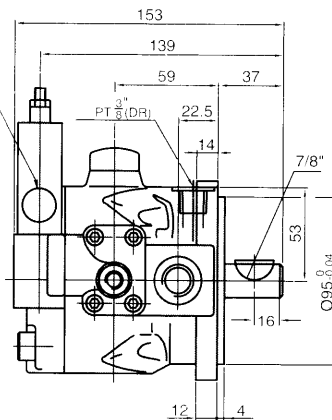
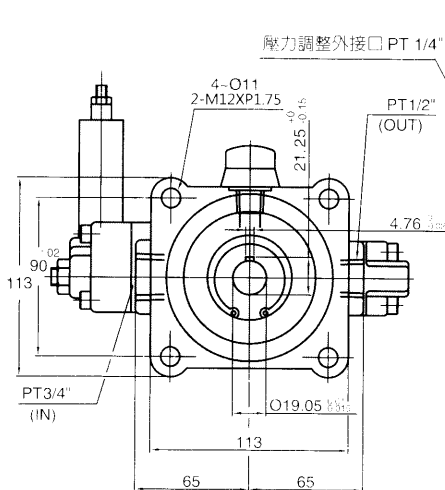
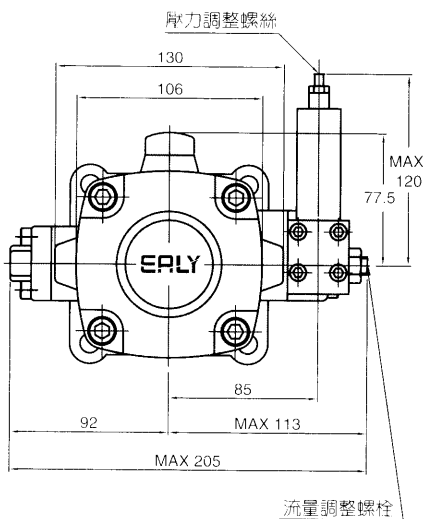


DIMENSIONS 尺寸

VDC-1B-20~40-20(平鍵)

VDC-1B-20~40-9T(花鍵)

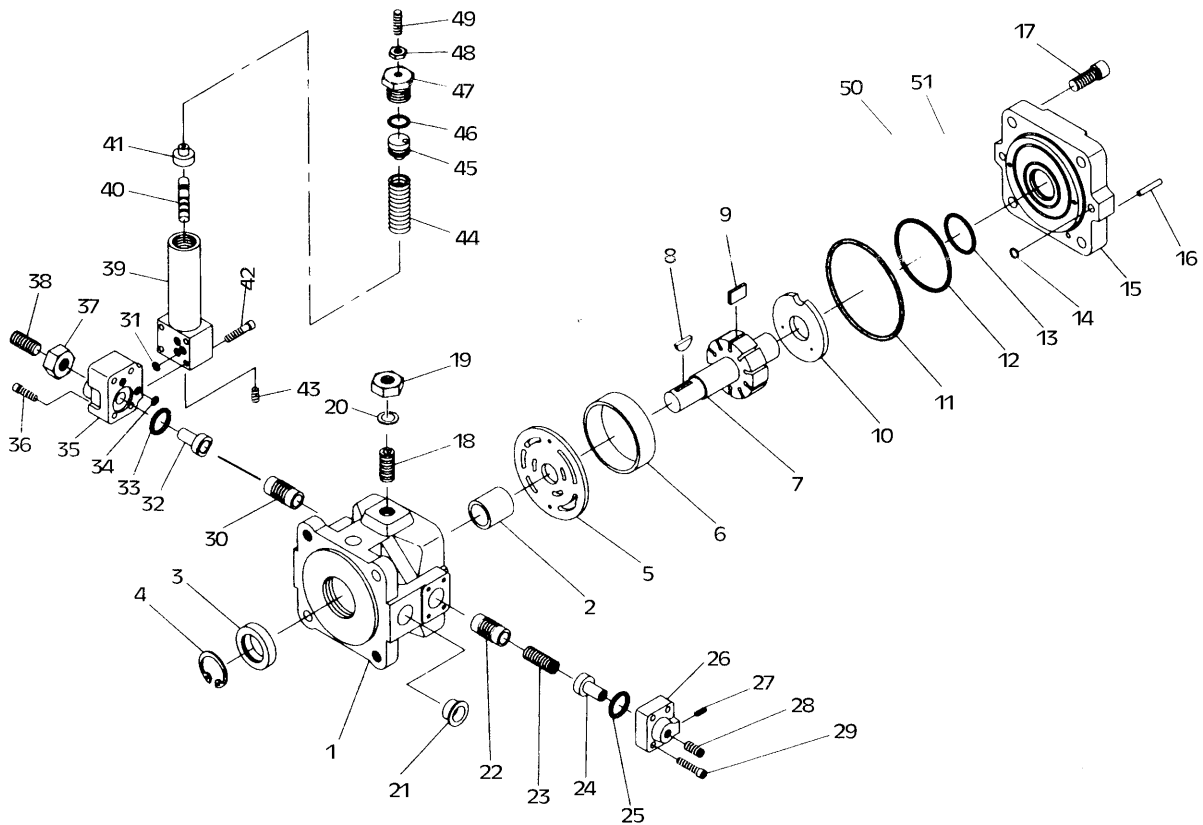
軸套: $\varnothing 24\text{mm}$



中壓變容量輪葉邦浦 MEDIUM-PRES. VARIABLE DISPLACEMENT VANE PUMPS

EALY ORBIT
www.ealy-orbit.com

DISASSEMBLY FIG 分解圖



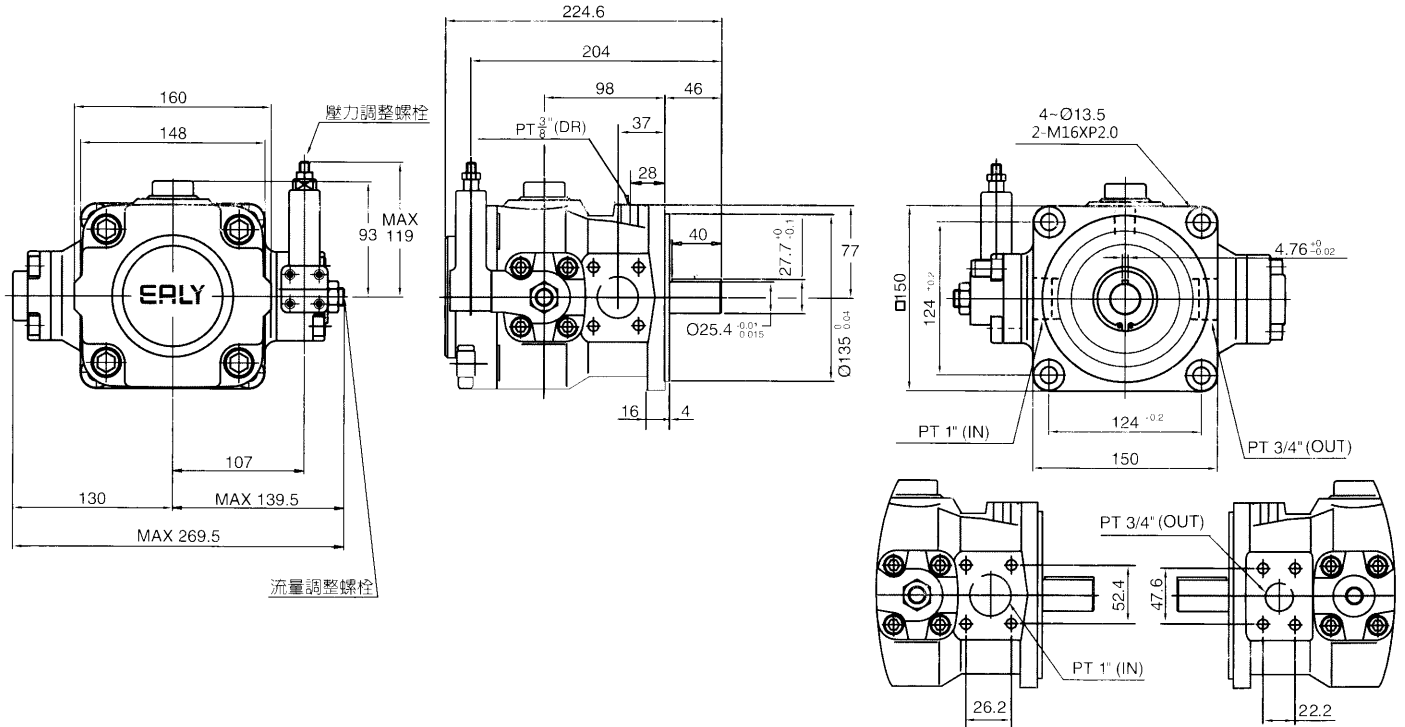
PARTS LIST 零件表

項目	內容	數量	附註	項目	內容	數量	附註	項目	內容	數量	附註
1	邦本體	1		18	固定螺絲	1	M16x1.0x36	35	調流側蓋	1	
2	無油軸承	1	DD22.25	19	螺帽	1	M16x1.0	36	六角沉頭螺絲	4	M6x1.0x35
3	油封	1	TCN 22x42x11	20	O形環	1	P16	37	螺帽	1	
4	扣環	1	R42	21	活塞	1		38	調整螺柱	1	M12x1.75x25
5	前分流板	1		22	調壓柱塞	1		39	調壓本體	1	
6	凸輪環	1		23	彈簧	1		40	調壓柱塞	1	
7	轉子	1		24	活塞	1		41	調壓彈簧座	1	
8	半圓鍵	1	3/16" x 7/8"	25	O形環	1	P20	42	六角沉頭螺絲	4	M5x0.8x25
9	葉片	13		26	側蓋	1		43	塞頭	1	
10	後分流板	1		27	定位梢	1	M6x1.0x10	44	彈簧	1	
11	O形環	1	2085	28	調整螺柱	1	M10x1.5x10	45	活塞	1	
12	背托環	1	G-58	29	六角沉頭螺絲	4	M6x1.0x25	46	O形環	1	P14
13	背托環	1	G-28	30	調壓柱塞	1		47	塞頭螺絲	1	
14	O形環	2	P6	31	O形環	3	P6	48	螺帽	1	M8x1.25
15	端蓋	1		32	活塞	1		49	調整螺柱	1	M8x1.25x30
16	定位梢	2	Ø4X10	33	O形環	1	P22	50	O形環	1	2059
17	六角沉頭螺絲	4	M10x1.5x35	34	O形環	2	P6	51	O形環	1	2028

中壓變容量輪葉邦浦 MEDIUM-PRES. VARIABLE DISPLACEMENT VANE PUMPS

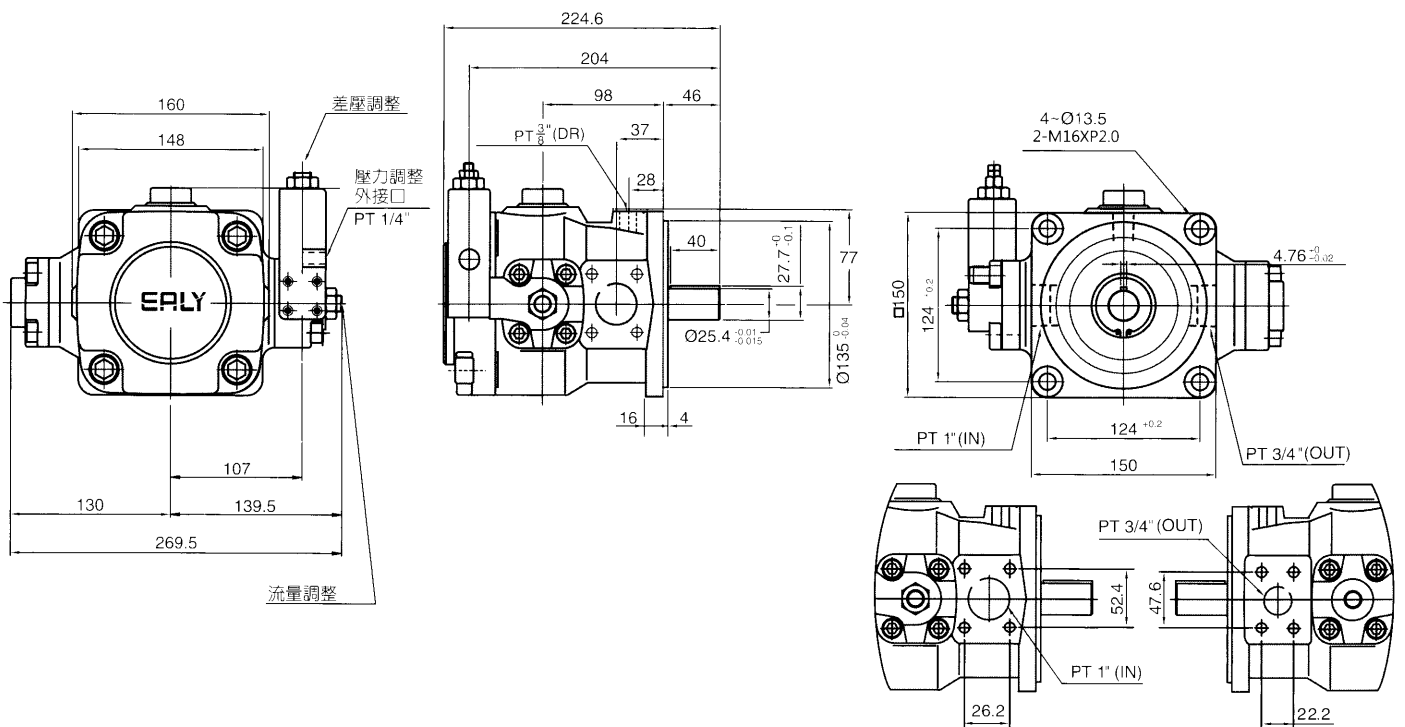
DIMENSIONS 尺寸

VDC-2A-54~86-20(平鍵)
出入口法蘭: 選配



DIMENSIONS 尺寸

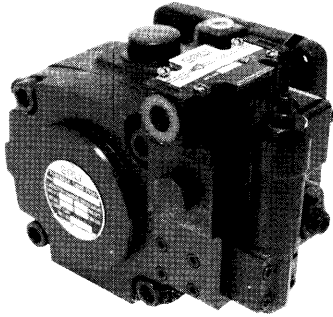
VDC-2B-54~86-20(平鍵)
出入口法蘭: 選配



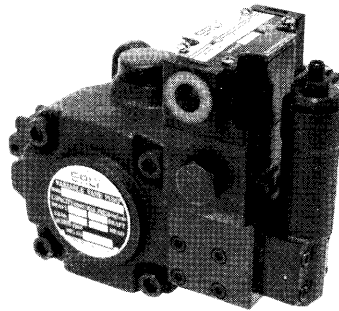
中壓變容量輪葉邦浦 MEDIUM-PRES. VARIABLE DISPLACEMENT VANE PUMPS



VDC-2C



VDC-1C



FEATURES:

- High efficiency, stabilize when high pressure operation.
- Can reduce when oil-temperature soar.
- Instant response for start and stop changing operation.
- Can reduce the motor power load.
- High efficiency operation with low motor power-loss.
- Easy operation for pressure and flow adjustment.

特點:

- 高效率、高壓運轉、性能穩定。
- 可減低油溫上昇。
- 應答性高，啓動、停止負荷變動，動作靈敏。
- 可降低馬力負荷量。
- 馬力損失小，運轉效率高。
- 壓力、流量調整容易，操作簡單。

Series:VDC

MODEL 型號	Adjustable type 調壓型式	Mounting 安裝方式	No-load delivery l/min (1800rpm) 無負載容量	Adjusting pressure range kgf/cm ² 壓力調整範圍		Design number 設計號碼
				SOL"ON"時	SOL"OFF"時	
VDC-※	C	-※	※	※		-※
VDC-1	Unload C:卸載型	F:Flange 法蘭型 L:FOOT 腳座型	20	A: 15~35 kgf/cm ² B: 20~70 kgf/cm ² C: 50~105 kgf/cm ² D: 70~140 kgf/cm ²	15~18	20:平鍵 9T:花鍵
			25			
	30					
	40					
VDC-2			54			20:平鍵
			70	最高壓力:105kgf/cm ²		
			86	最高壓力: 70 kgf/cm ²		

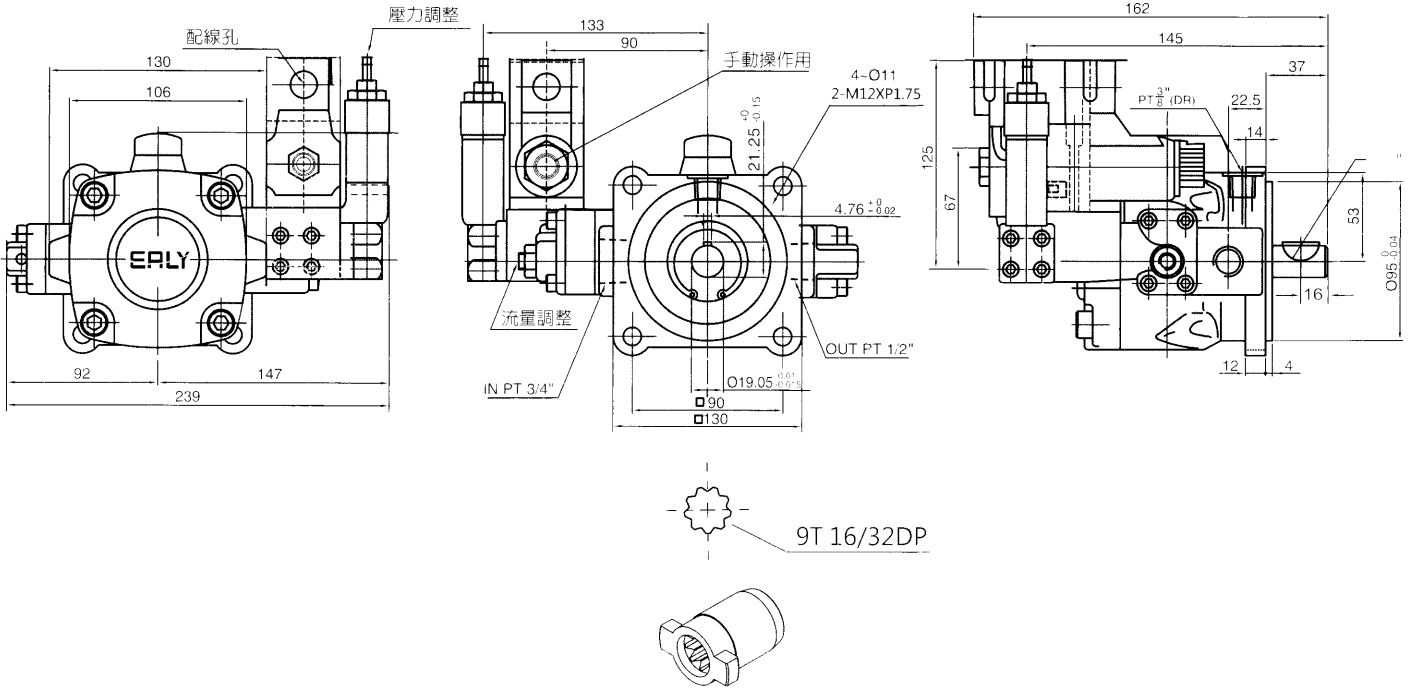
重量	型號	VDC-1C	VDC-2C
WEIGHT kgf (lbs) 重量	F: 法蘭型	11kg	27.1kg
	L: 腳座型	14.3kg	33.8kg

※ 重量不含2B8

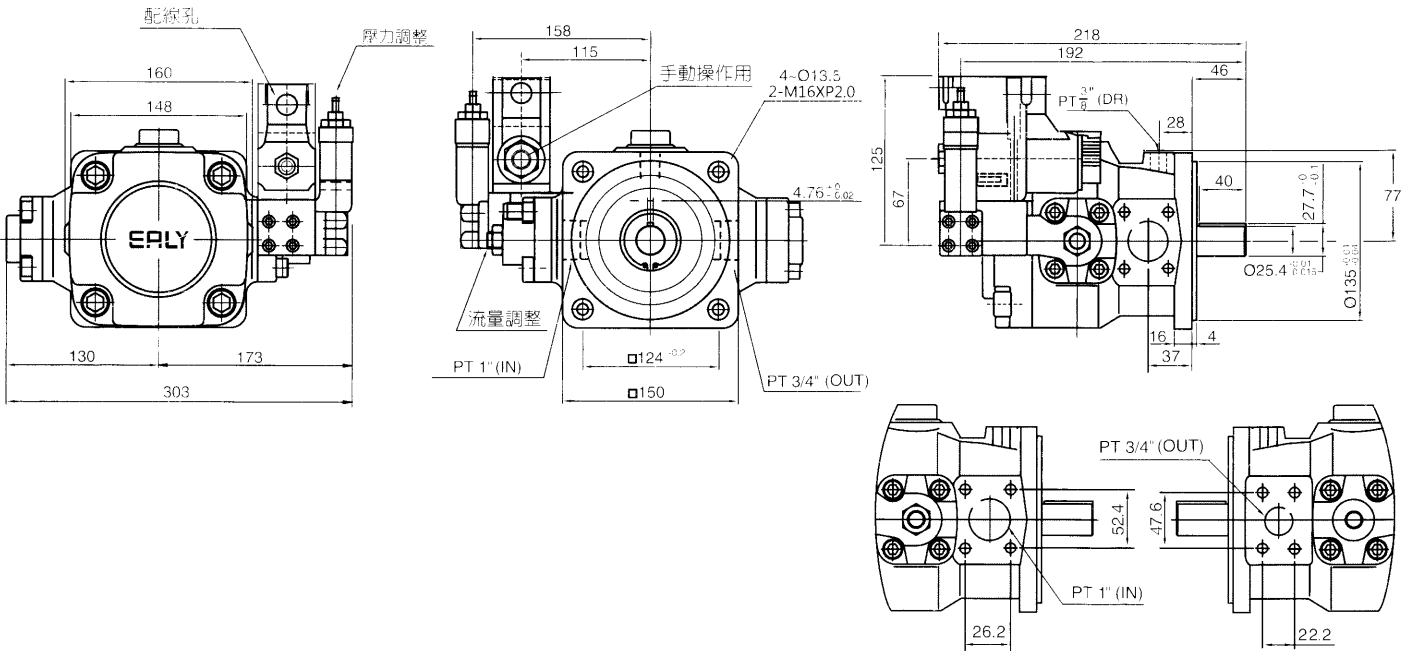
※ 最高轉數(Speed MAX):1800r/min
最低轉數(Speed MIN): 800r/min

中壓變容量輪葉邦浦 MEDIUM-PRES. VARIABLE DISPLACEMENT VANE PUMPS

DIMENSIONS 尺寸
VDC-1C-25~40-20(平鍵)
VDC-1C-25~40-9T(花鍵)
軸套: $\varnothing 24\text{mm}$



DIMENSIONS 尺寸
VDC-2C-54~86-20(平鍵)
出入口法蘭: 選配

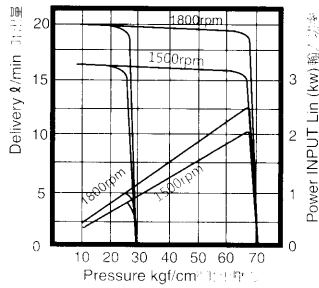


中壓變容量輪葉邦浦 MEDIUM-PRES. VARIABLE DISPLACEMENT VANE PUMPS

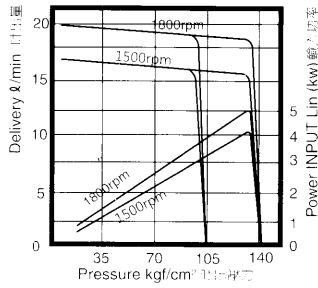


PERFORMANCE CURVEDIMENSIONS 性能曲線

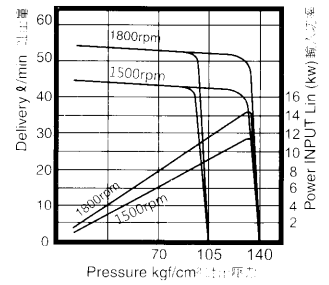
Series: VDC-1※-F20※-20



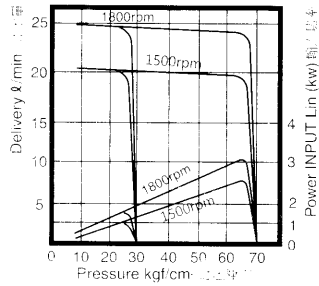
Series: VDC-1※-F20※-20



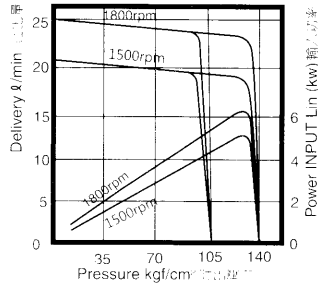
Series: VDC-2※-F54※-20



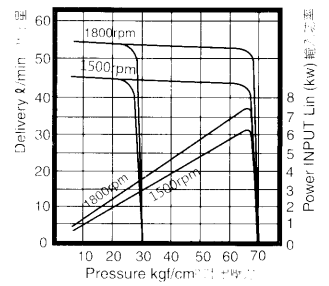
Series: VDC-1※-F25※-20



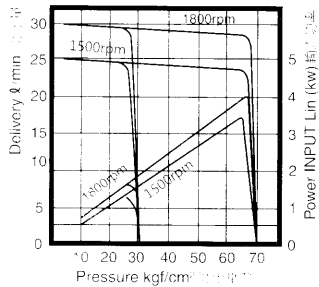
Series: VDC-1※-F25※-20



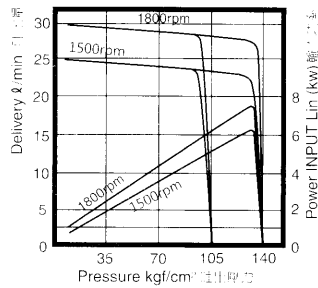
Series: VDC-2※-F54※-20



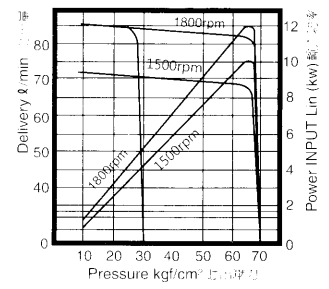
Series: VDC-1※-F30※-20



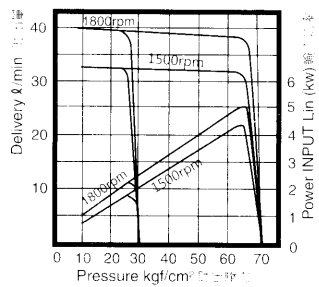
Series: VDC-1※-F30※-20



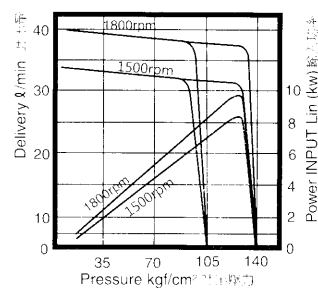
Series: VDC-2※-F86※-20



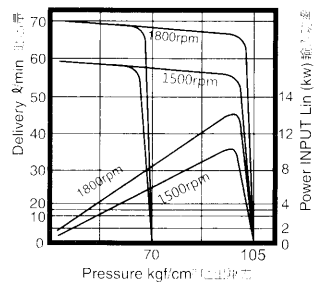
Series: VDC-1※-F40※-20



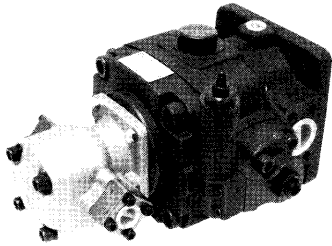
Series: VDC-1※-F40※-20



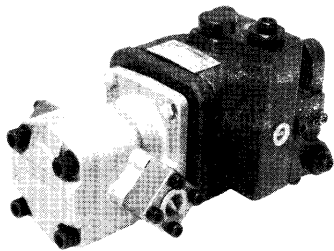
Series: VDC-2※-F70※-20



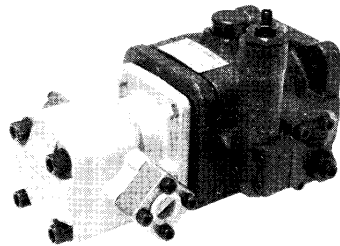
VDC-2A+PA



VDC-1B+PA



VDC-1A+PA



FEATURES:

- The system design engineers a low cost, high working pressure, simple structure, easily-maintain and installation.
- High flow capacity and saving horsepower and small size provide economic space.
- Maximum working pressure 210kgf/cm²(3000psi).
- Low noise level, endurance and hear generated is much less.
- Variable displacement pump and gear pump one are assembled with the same shaft directly.

特點:

- 低價位、高壓力、結構簡單、配管維修容易。
- 大流量、省馬力、體積小，可節省空間。
- 最高工作壓力210kgf/cm² (3000psi)。
- 低噪音、不易生熱、耐磨耗。
- 變量幫與gear pump採取直結式同一軸心組合。

Series: **VDCG + PA**

MODEL 型號	Adjustable type 調壓型式	Mounting 安裝方式	No-load delivery l/min (1800rpm) 無負載容量	Adjusting pressure range kgf/cm ² 壓力調整範圍	Gear pump 齒輪泵	Design number 設計號碼
VDCG- ✱	✱	- ✱	- ✱	- ✱	- PA	- ✱
VDCG- 1	Normal A: 規格品	F: Flange 法蘭型	20	A: 15~35 kgf/cm ²	HGP-2A 2~12	20: 平鍵
	Addition B: 外接型	L: FOOT 腳座型	25	B: 20~70 kgf/cm ²		9T: 花鍵
	Unload C: 卸載型		30	C: 50~105 kgf/cm ²		
			40	D: 70~140 kgf/cm ²		
VDCG- 2			54	最高壓力: 105kgf/cm ²		20: 平鍵
			70	最高壓力: 70 kgf/cm ²		
			86			

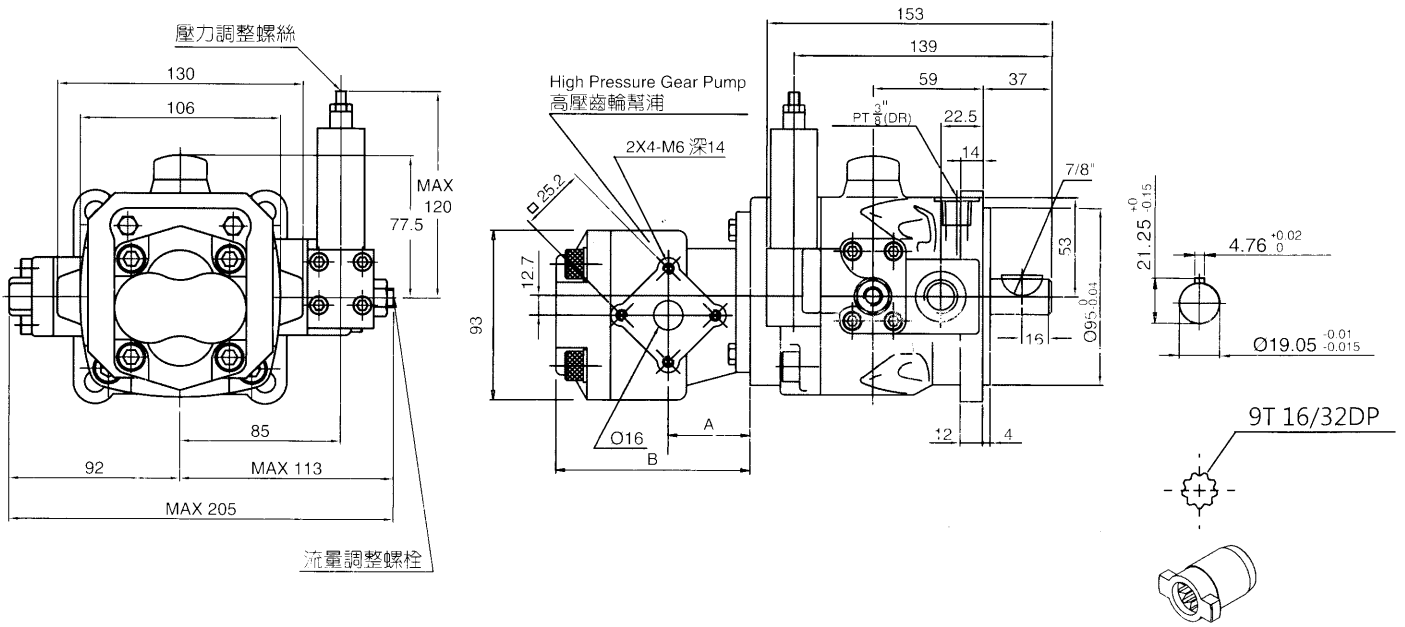
重量	容量	VDCG-1A	VDCG-2A
WEIGHT kgf (lbs) 重量	F: 法蘭型	10.7kg	21.2kg
	L: 腳座型	13.9kg	32.4kg

- ✱ 重量不含後端齒輪泵
- ✱ 最高轉數(Speed MAX): 1800r/min
- 最低轉數(Speed MIN): 1000r/min

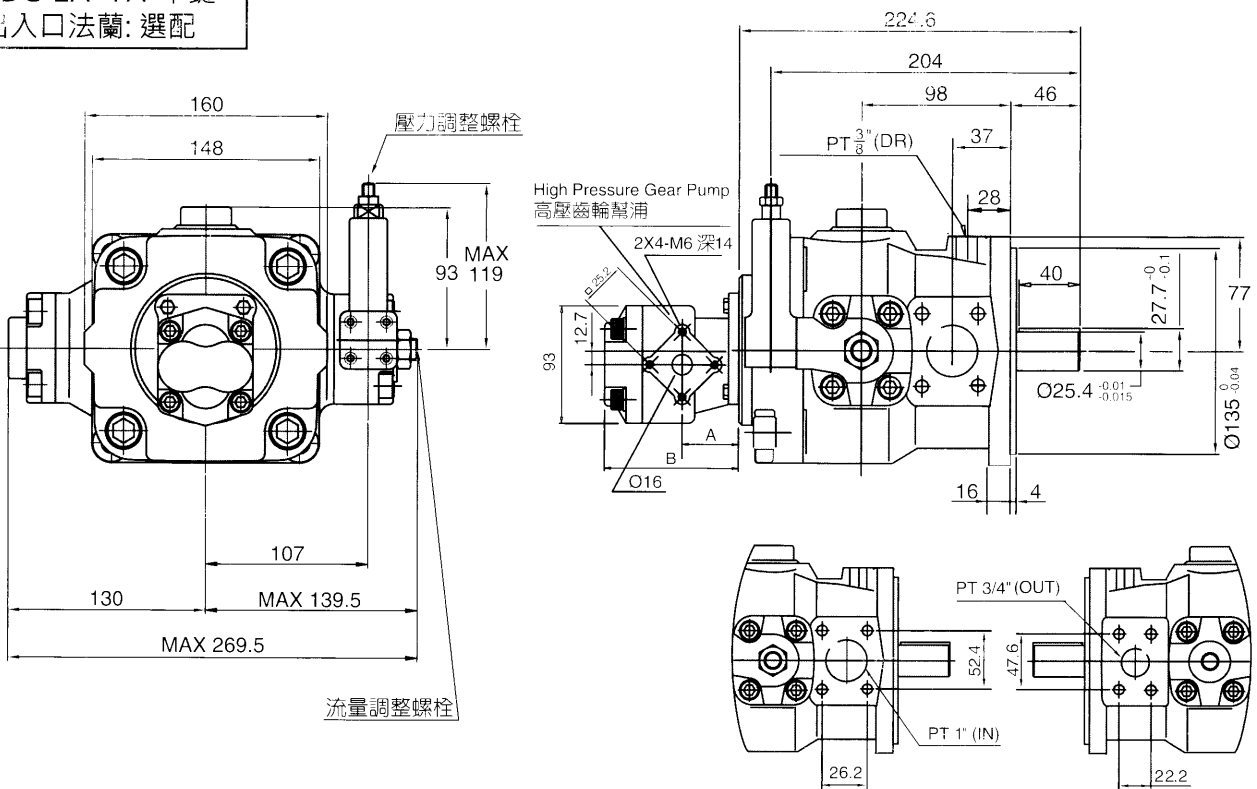
中壓變容量輪葉邦浦+齒輪邦浦 MEDIUM-PRES. VARIABLE DISPLACEMENT VANE PUMPS + GEAR PUMPS



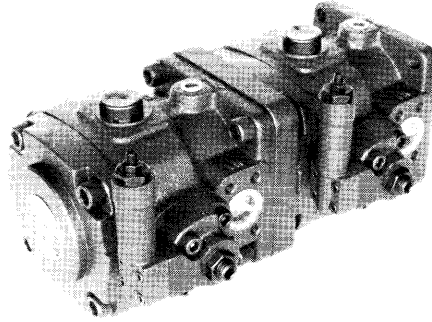
DIMENSIONS 尺寸
 VDCG-20~40-平鍵
 VDCG-20~40-9T(花鍵)
 軸套: $\varnothing 24\text{mm}$



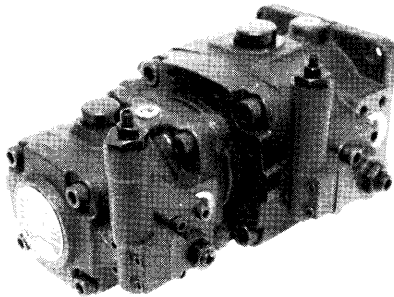
DIMENSIONS 尺寸
 VDC-2A+PA-平鍵
 出入口法蘭: 選配



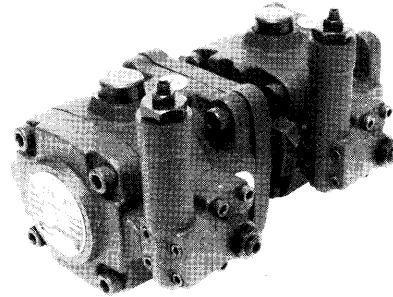
VDC-22A



VDC-12A



VDC-11A



Series: **VDC**

Series Number 系列號碼	MODEL 型號	Adjustable type 調壓型式	Mounting 安裝方式	Shaft end (c.c/rew) 軸端	Pressure range kgf/cm ² 壓力範圍	Cover end (c.c/rew) 蓋端	Pressure range kgf/cm ² 壓力範圍	Design Number 設計號碼
VDC-	※	※	※	- ※	※	- ※	※	- ※
VDC-	11 (1A+1A)	Normal A: 規格品	F: Flange 法蘭型	(1A)	A: 15~35 kgf/cm	(1A)	A: 15~35 kgf/cm	20
	20 25			B: 20~70 kgf/cm	20 25	B: 20~70 kgf/cm		
	12 (1A+2A)	Addition B: 外接型	L: Foot 腳座型	30 40	C: 50~105 kgf/cm	30 40	C: 50~105 kgf/cm	
	(2A)			D: 70~140 kgf/cm	(2A)	D: 70~140 kgf/cm		
	22 (2A+2A)	Unload C: 卸載型		54		54		
70	最高壓力: 105kgf/cm ²	70	最高壓力: 105kgf/cm ²					
86	最高壓力: 70 kgf/cm ²	86	最高壓力: 70 kgf/cm ²					

重量		容量	VDC-11A	VDC-12A	VDC-22A
WEIGHT kgf (lbs) 重量	F: 法蘭型		22kg	38.5kg	56kg
	L: 腳座型		25.2kg	45.2kg	63.8kg

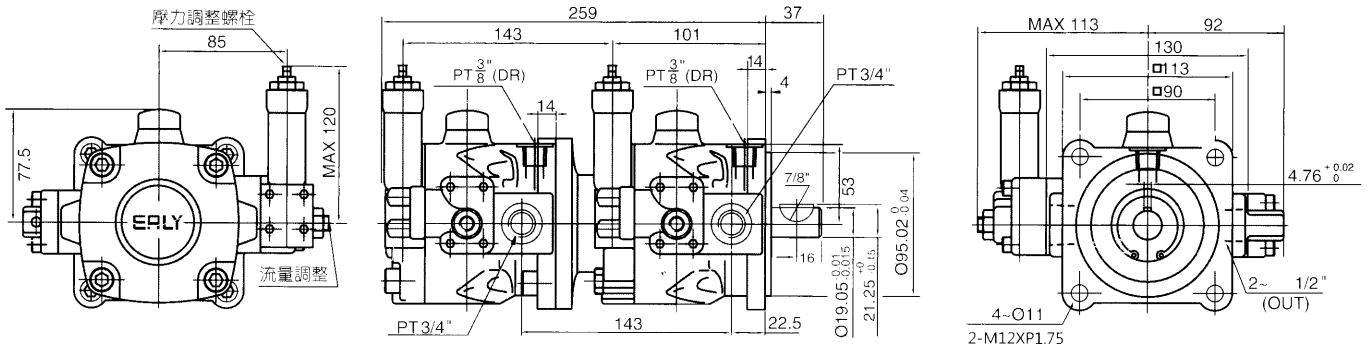
最高轉數(Speed MAX): 1800r/min
最低轉數(Speed MIN): 800r/min

中壓雙連變量邦浦 MEDIUM-PRES. VARIABLE DISPLACEMENT VANE PUMPS

EALY ORBIT
www.ealy-orbit.com

DIMENSIONS 尺寸

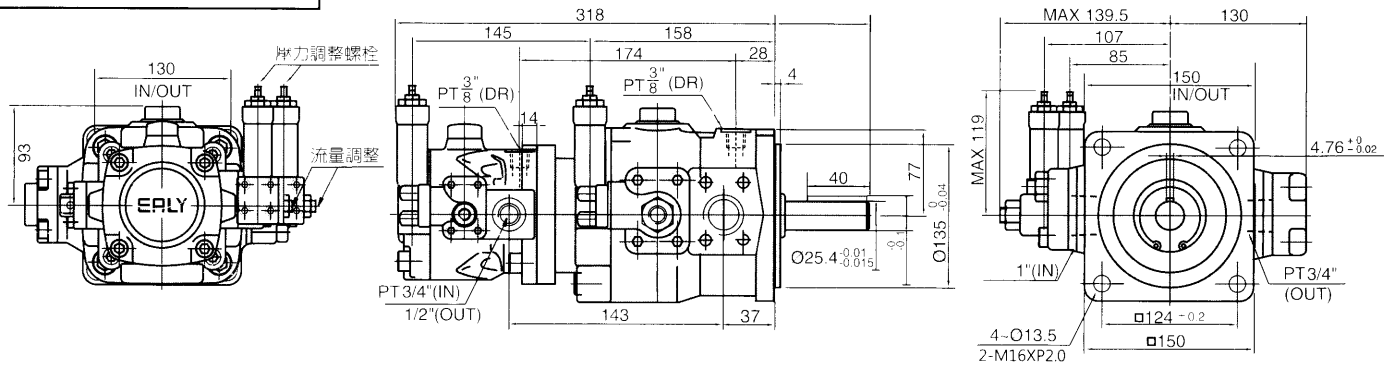
VDC-11A-(20~40)-平鍵



DIMENSIONS 尺寸

VDC-12A-(1A+2A)平鍵

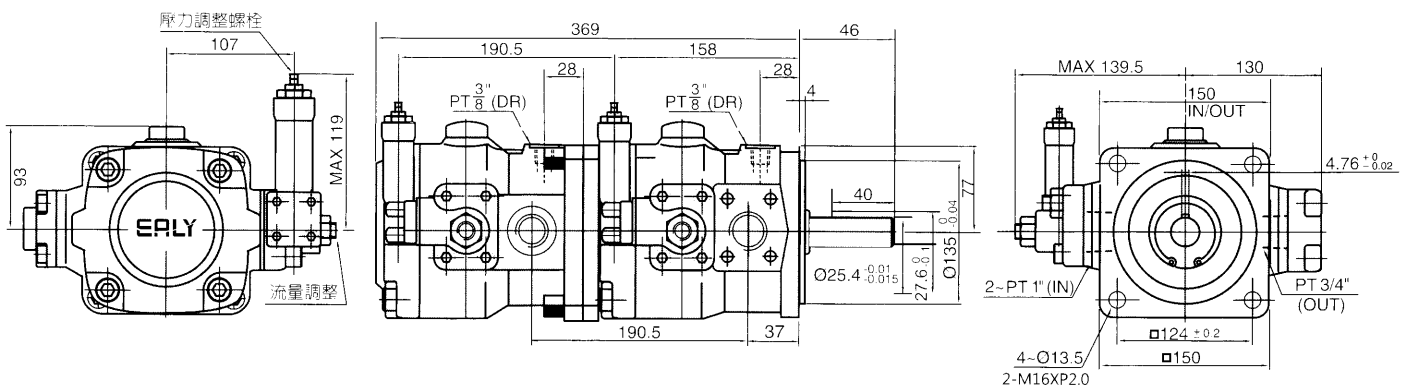
2A出入口法蘭: 選配
法蘭安裝尺寸參考 P21



DIMENSIONS 尺寸

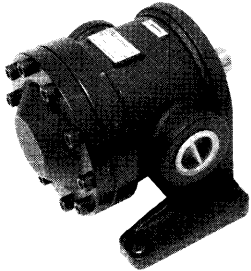
VDC-22A-(54~86)-平鍵

2A出入口法蘭: 選配
尺寸參考 P21

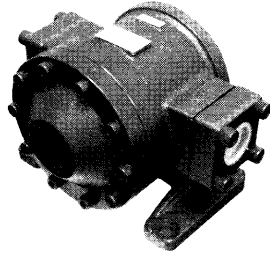


固定容量輪葉邦浦 FIXED DISPLACEMENT VANE PUMPS

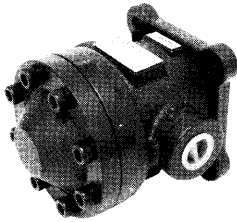
150T-L



150F-L



50T-F



FEATURES:

- These pumps are designed for low noise level and high volumn efficiency.
- Smooth running high stability and durability.
- Inlet resistances are particularly considered in input-port design.
- Maximum working pressure up to 70 kgf/cm² (1000 psi).

特點:

- 此邦浦是低噪音、高容積效率設計。
- 運轉圓滑，穩定性高、壽命長。
- 吸入口設計有特殊考慮到其吸入阻抗。
- 最高工作壓力70 kgf/cm²(1000 psi)。

Series: 150T, 50T

MODEL 型號	Delivery capacity (c.c/rev) 吐油量	Mounting 安裝方式	Rotating direction 迴轉方向	Discharge portion (Shaft end) 出油口(軸端)	Shaft end 軸端	Design number 設計號碼
※	- ※	※	※	※	※	- 10
50T	07 12 14 17 20 23 26 30 36 40 43	F: Flange 法蘭型	R: CW 正轉	R: Right side 右邊	無: 規格品 Ø22 X: 軸心 Ø19.05	- 10
150T 接管式 150F 法蘭式	48 61 75 94 125 116	L: FOOT 腳座型	L: CCW 反轉	L: Left side (normal) 左邊-(規格品)	無: 規格品 Ø30	

重量		型號	50T	150T	150F
WEIGHT kgf (lbs) 重量	F: 法蘭型		9.8kg	24kg	27.5kg
	L: 腳座型		10.7kg	24.2kg	27.5kg

※ 150F重量含出入口法蘭

固定容量輪葉邦浦 FIXED DISPLACEMENT VANE PUMPS



Specification 規格說明

50T

MODEL CODING 型式號碼	DELIVERY CAPACITY (cc/rev) 吐出能量				ALLOWABLE ROTATIONAL SPEED (r.p.m.) 迴轉速		MAX.PRESSURE kgf/cm ² 最高壓力	IN/OUT 出入口
	SPEED OF ROTATION (rpm) 迴轉速				MAX. (最高)	MIN. (最低)		
	1000	1200	1500	1800				
50T-07	-	9.0	11.2	13.5	1800	1200	70	入口 IN: 1" 出口 OUT: 3/4"
50T-12	12	14.4	18.0	21.6	1800	950		
50T-14	14.6	17.5	21.7	26.1				
50T-17	17	20.3	25.5	31.5				
50T-20	20.1	24.1	30.2	36				
50T-23	23	27.6	34.5	41.4				
50T-26	26.2	31.4	39.3	47.2				
50T-30	30	36	44.5	53				
50T-36	36.2	43.4	54.3	64				
50T-40	40	48	60	72				
50T-43	43	51.6	-	-	1500	950		

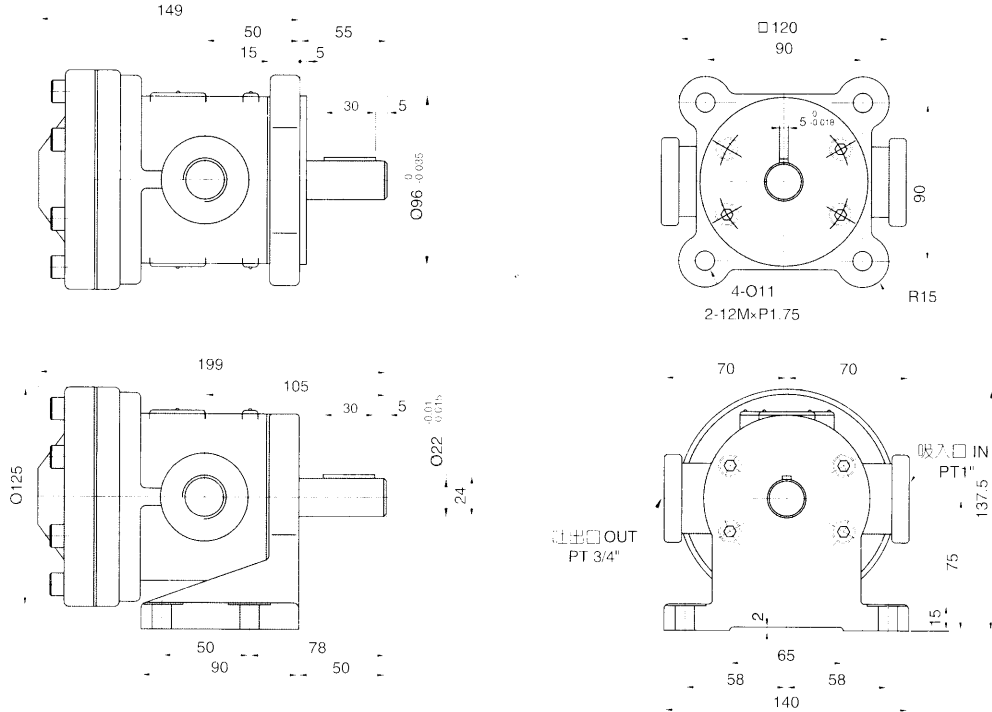
Specification 規格說明

150T

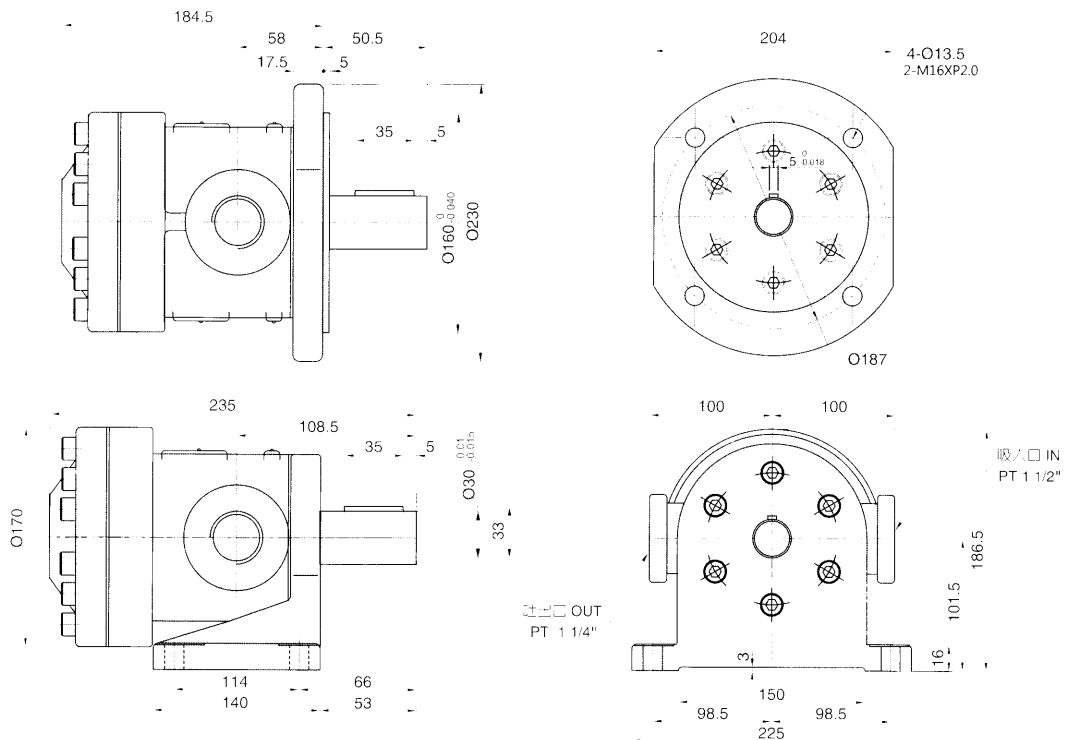
MODEL CODING 型式號碼	DELIVERY CAPACITY (cc/rev) 吐出能量				ALLOWABLE ROTATIONAL SPEED (r.p.m.) 迴轉速		MAX.PRESSURE kgf/cm ² 最高壓力	IN/OUT 出入口
	SPEED OF ROTATION (rpm) 迴轉速				MAX. (最高)	MIN. (最低)		
	1000	1200	1500	1800				
150T-48	48.3	57.9	72.4	86.9	1800	900	70	入口 IN: 1-1/2" 出口 OUT: 1-1/4"
150T-61	61.5	73.8	92.2	110.7				
150T-75	75.5	90.6	113.2	135.9				
150T-94	94.2	113.0	141.3	169.5				
150T-116	116.3	139.6	174.0	-	1200			
150T-125	125.2	150.2	-	-				

固定容量輪葉邦浦 FIXED DISPLACEMENT VANE PUMPS

DIMENSIONS 尺寸
50T



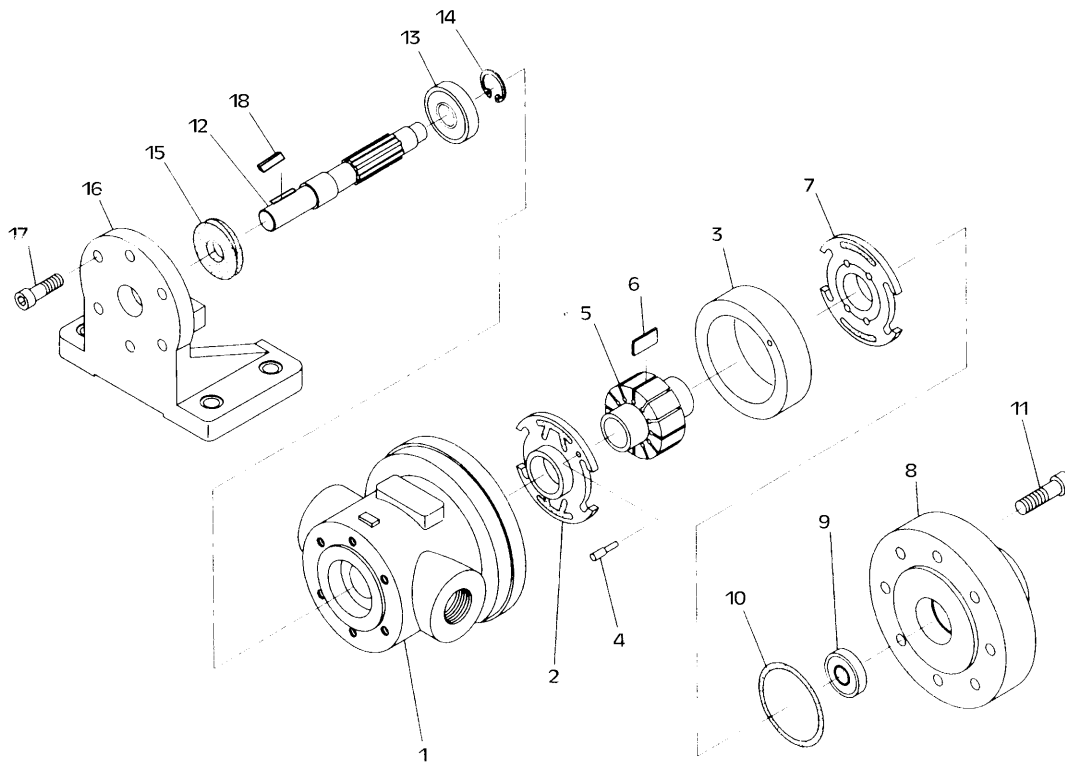
DIMENSIONS 尺寸
150T



固定容量輪葉邦浦 FIXED DISPLACEMENT VANE PUMPS

EALY ORBIT
www.ealy-orbit.com

DISASSEMBLY FIG 分解圖



PARTS LIST 零件表 - 50T

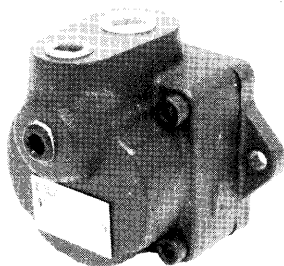
項目 ITEM	內容 DESCRIPTION	數量 QUANTITY	附註 REMARKS
1	邦本體	1	
2	前分流板	1	
3	凸輪環	1	
4	定位梢	1	
5	轉子	1	
6	葉片	12	
7	後分流板	1	
8	端蓋	1	
9	軸承	1	6200
10	O形環	1	G75
11	六角沉頭螺絲	8	M10x1.5x30
12	軸	1	
13	軸承	1	6204
14	扣環	1	S-20
15	油封	1	25x47x8
16	法蘭(腳座)	1	
17	六角沉頭螺絲	4	M10x1.5x20
18	平鍵	1	5x5x30

PARTS LIST 零件表 - 150T

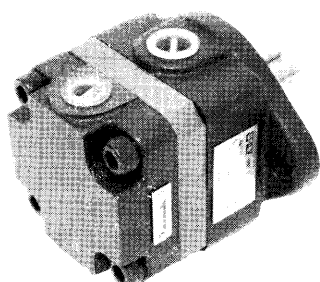
項目 ITEM	內容 DESCRIPTION	數量 QUANTITY	附註 REMARKS
1	邦本體	1	
2	前分流板	1	
3	凸輪環	1	
4	定位梢	1	
5	轉子	1	
6	葉片	12	
7	後分流板	1	
8	端蓋	1	
9	軸承	1	6203
10	O形環	1	G120
11	六角沉頭螺絲	10	M10x1.5x35
12	軸	1	
13	軸承	1	6205
14	扣環	1	S-25
15	油封	1	32x52x9
16	法蘭(腳座)	1	
17	六角沉頭螺絲	6	M10x1.5x20
18	平鍵	1	7x7x35

固定容量輪葉邦浦 FIXED DISPLACEMENT VANE PUMPS

FB1



FA1



FEATURES:

- Light weight compact size but large flow rate economical and durable pumps especially for machine tools and single purpose machines.
- High efficiency stability on low to high pressure adjustment.
- Wear resistance with less heat on high speed rotation.
- By using CAM RING, low pulse on output pressure with constant flow rate.
- Low inlet resistance two selections on the pump of input and output pipings(same directions and / or 90° apart).
- Low noise level.

特點:

- 此系列邦浦是重量輕、流量大、體積小，適用於工作機械、專用機械，經濟實用。
- 壓力調整由低壓到高壓，脈動穩定、效率高。
- 高速迴轉使用不易生熱、磨耗低。
- 採用CAM RING吐出壓力，脈動小、流量穩定。
- 吸入阻抗低，原出油口配管位置與進油口配管有同方向與 90°方向兩種選擇。
- 噪音值低。

Series:FB1 FA1

MODEL 型號	Mounting 安裝方式	Displacement capacity (cm ³ /rev) 容 積	Rotating direction 迴轉方向	Design number 設計號碼	Max. pressure kgf 最高壓力	SPEED(rpm) 速度(迴轉數/每分鐘)	
						MAX (最高)	MIN (最低)
F※1	-※	※	※	- 10	70 kgf/cm ²	1800	600
FB 1	F:Flange 法蘭型	3	R: CW 正轉	- 10			
		5					
		7					
FA 1	F:Flange 法蘭型	2	R: CW 正轉				
		5					
	L: FOOT 腳座型	8	L: CCW 反轉				
		11					
13	1800	900					
					1500	900	

重量	型號	FB1	FA1
WEIGHT kgf (lbs) 重量	F: 法蘭型	3.5kg	4.7Kg
	L: 腳座型		6.2kg

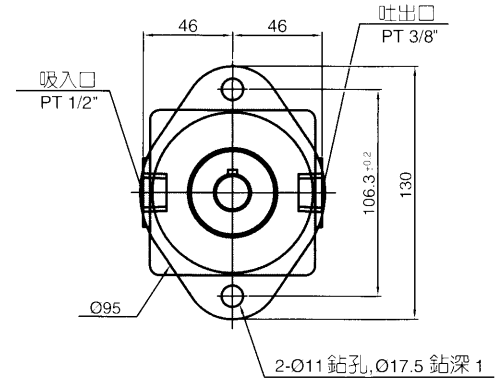
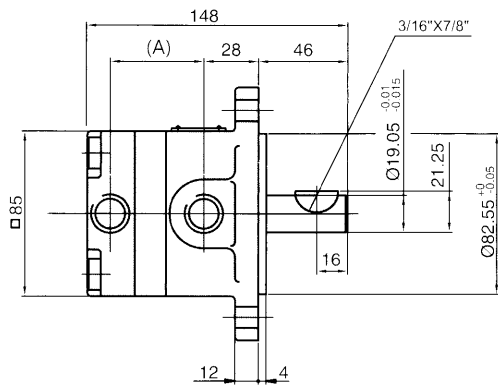
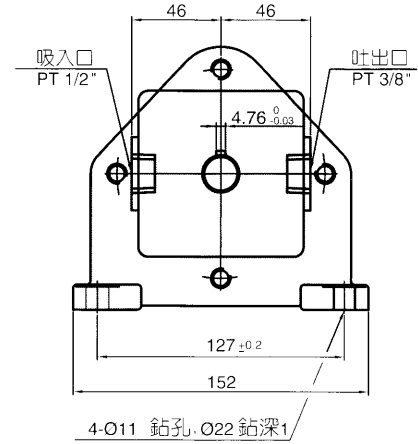
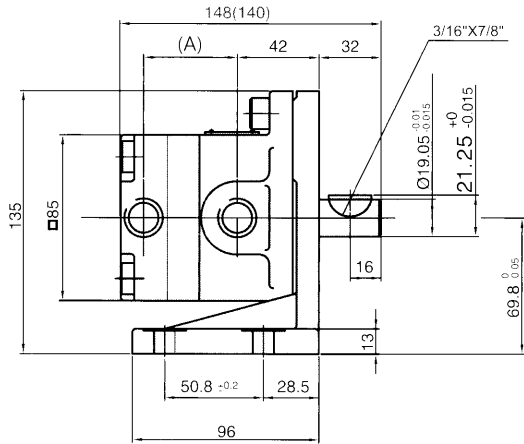
固定容量輪葉邦浦 FIXED DISPLACEMENT VANE PUMPS



DIMENSIONS 尺寸

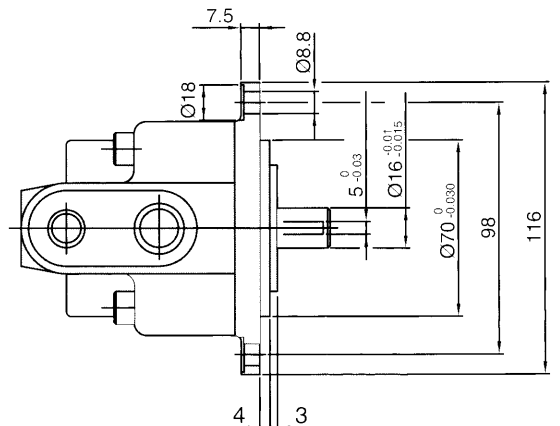
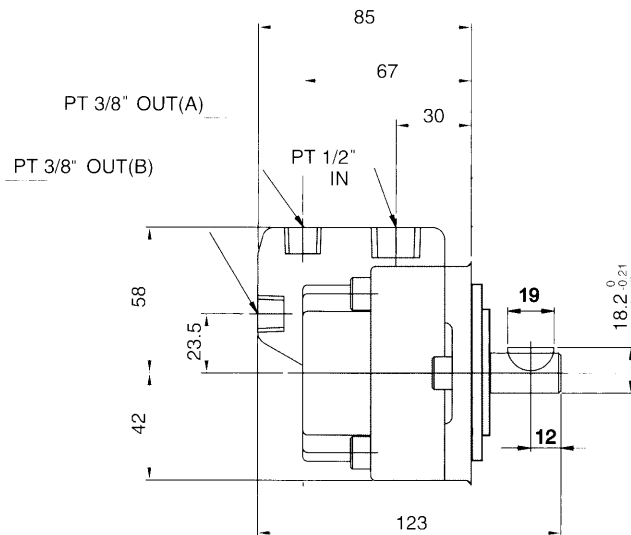
FA1

型號	A
FA1-02~11	47
FA1-13	55

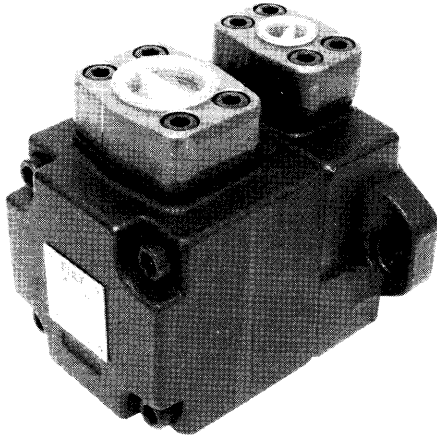


DIMENSIONS 尺寸

FB1



固定容量輪葉邦浦 FIXED DISPLACEMENT VANE PUMPS



FEATURES:

- Large flow rate and high pressure with more compact size of the pump on the market.
- Maximum working pressure up to 210kgf/cm² (3000p.s.i.)
- Either inlet or outlet ports can be chosen for easien installation and maintainance.
- Rotating directions (clockwise or anticlockwise) can also be free to select.

特點:

- 市面上同級邦浦中，具有體積小、大流量、高壓力的特點。
- 最高使用壓力210kgf/cm²(3000p.s.i.)。
- 出、入油口的組立方向可任意選擇、安裝、維修容易。
- 正逆轉方向，改變簡單。

Series: **PV2R 1**
PV2R 2

MODEL 型號	Delivery capacity (c.c/rev) 吐出量	Mounting 安裝方式	Rotating direction 迴轉方向	Discharge portion (Shaft end) 出油口(軸端)	Suction portion (Cover end) 入油口(蓋端)	Design number 設計號碼
PV2R ※	- ※	※	※	※	※	- ※
PV2R 1	8,12,14,17 19,23,25,31	F:Flange 法蘭型	R: CW 正轉	A: Upward 上 B: Downward 下	A: Upward 上 B: Downward 下	-10 軸心: Ø19.05
PV2R 2	26,33,38,41 47,53,59,65	L: FOOT 腳座型	L: CCW 反轉	R: Right side 右 L: Left side 左	R: Right side 右 L: Left side 左	x-10 軸心: Ø22.23 -10 軸心: Ø25.4

重量		型號	PV2R1	PV2R2
WEIGHT kgf (lbs) 重量	F: 法蘭型		10.5kg	18.2kg
	L: 腳座型		13.1kg	23kg

高壓固定容量輪葉邦浦

High Pressure Fixed Displacement Vane Pumps



Specification 規格說明

PV2R1

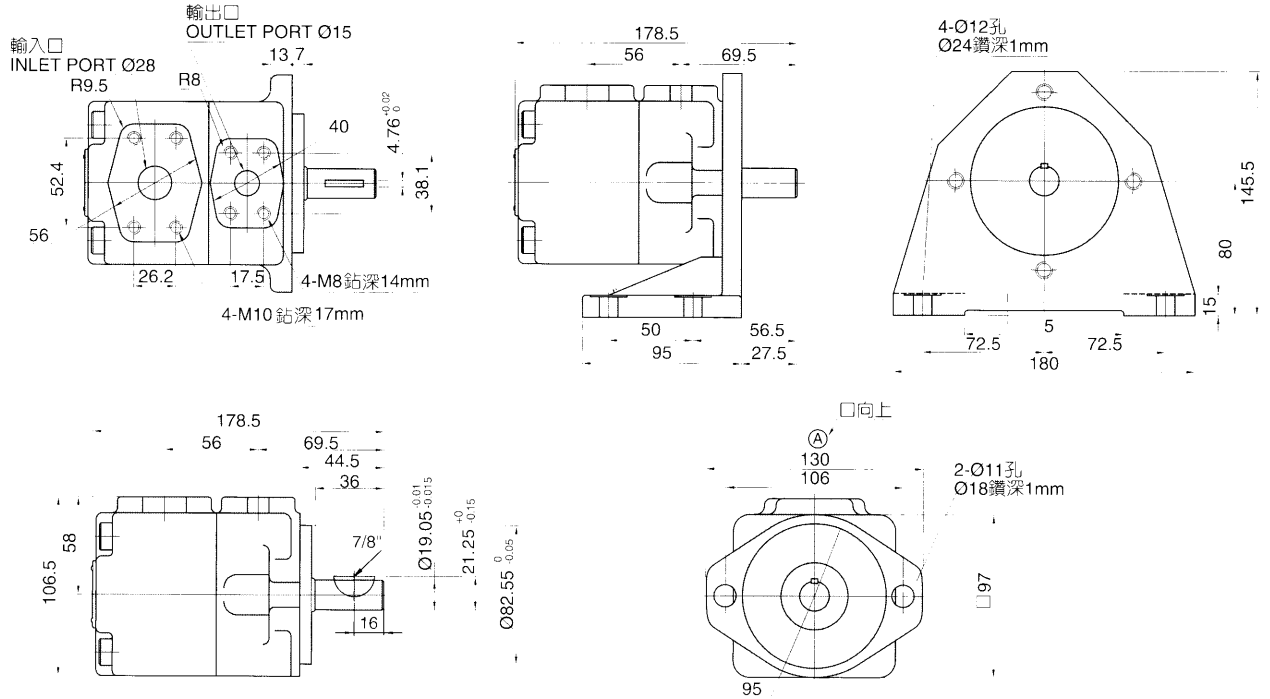
MODEL CODING 型式號碼	DELIVERY CAPACITY (cc/rev) 吐出能量				MAX.PRESSURE kgf/cm ² 最高壓力	RATED SPEED 額定速度		出入口法蘭 IN/OUT Flange mounting
	SPEED OF ROTATION (rpm) 迴轉速					MAX. (最高)	MIN. (最低)	
	1000	1200	1500	1800				
PV2R1-08	8.1	9.7	12.1	14.6	210	1800	1200	IN: 1" OUT: 1/2"
PV2R1-12	12.2	14.6	18.3	21.9				
PV2R1-14	13.6	17.1	21.5	25.7				
PV2R1-17	16.6	20.5	25.6	30.7				
PV2R1-19	18.6	23.0	28.8	34.5				
PV2R1-23	22.7	27.9	34.9	41.9				
PV2R1-25	25.3	31.3	39.1	46.9	175	1500	950	
PV2R1-31	31.0	37.3	46.6	-				

Specification 規格說明

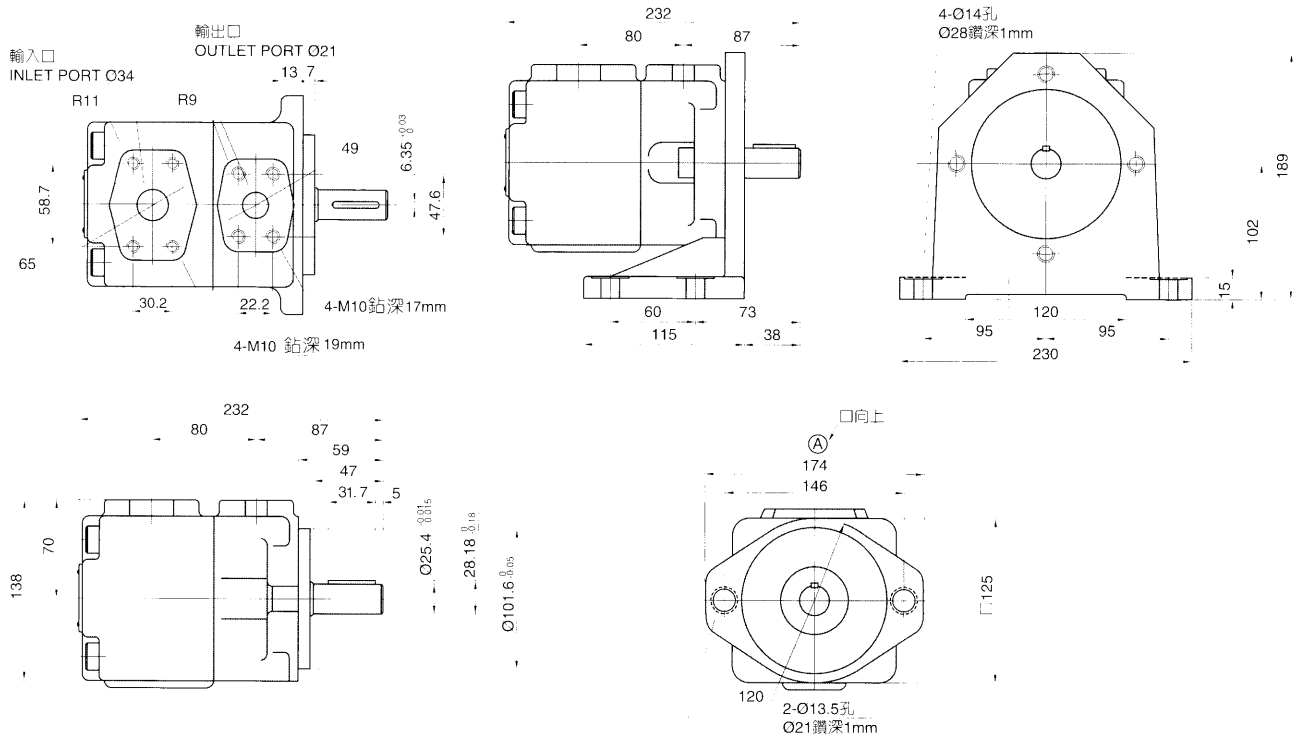
PV2R2

MODEL CODING 型式號碼	DELIVERY CAPACITY (cc/rev) 吐出能量				MAX.PRESSURE kgf/cm ² 最高壓力	RATED SPEED 額定速度		出入口法蘭 IN/OUT Flange mounting
	SPEED OF ROTATION (rpm) 迴轉速					MAX. (最高)	MIN. (最低)	
	1000	1200	1500	1800				
PV2R2-26	26.2	31.4	39.3	47.1	210	1800	950	IN: 1-1/4" OUT: 3/4"
PV2R2-33	33.0	38.5	48.1	57.7				
PV2R2-38	38.2	45.8	57.3	68.7				
PV2R2-41	41.3	49.2	61.5	73.8				
PV2R2-47	47.2	57.8	71.4	86.7				
PV2R2-53	52.3	62.7	78.4	94.1				
PV2R2-59	60.2	72.7	90.3	108.3				
PV2R2-65	65.3	78.3	97.9	117.5				

DIMENSIONS 尺寸圖
PV2R1



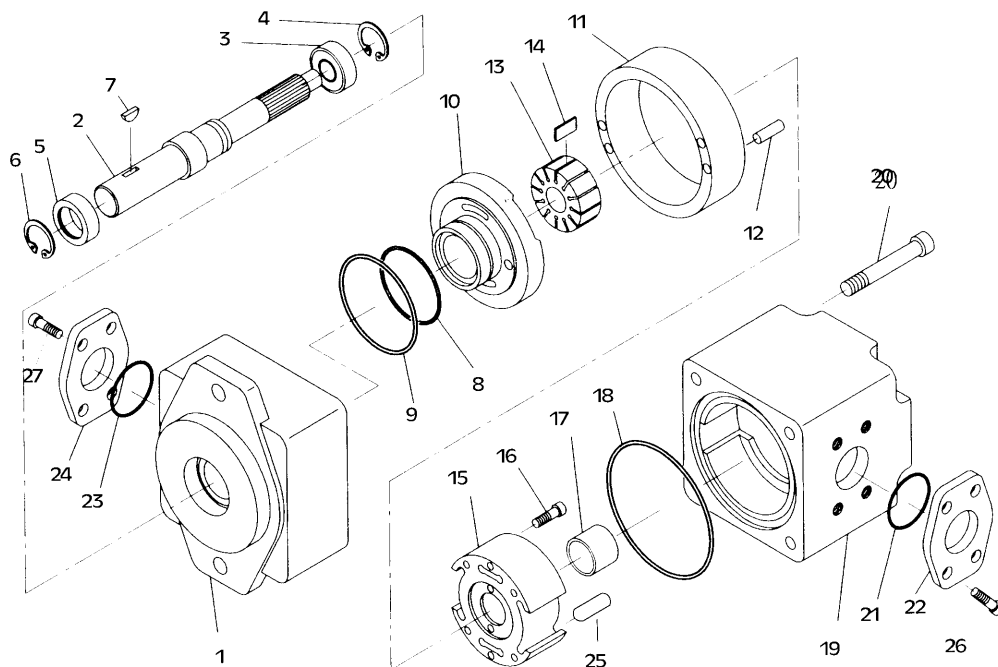
DIMENSIONS 尺寸圖
PV2R2



高壓固定容量輪葉邦浦 HIGH PRESSURE FIXED DISPLACEMENT VANE PUMPS

EALY ORBIT
www.ealy-orbit.com

DISASSEMBLY FIG 分解圖

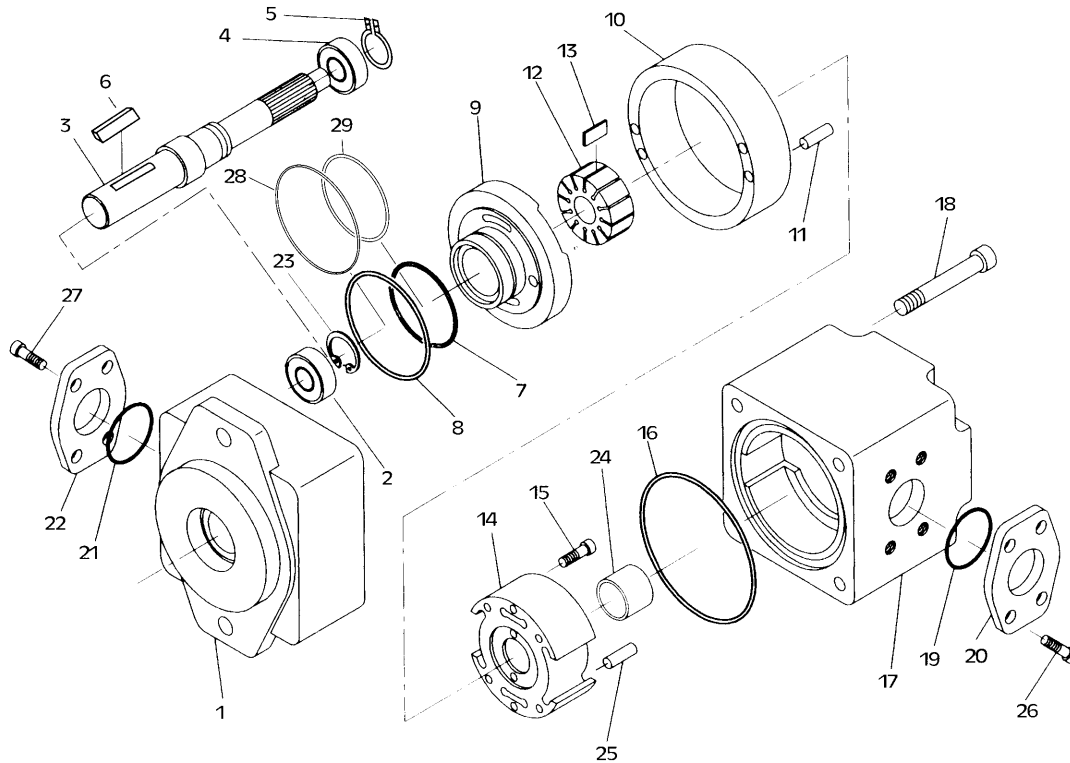


PARTS LIST 零件表-PV2R1

項目 ITEM	內容 DESCRIPTION	數量 QUANTITY	附註 REMARKS
1	Pump housing 邦本體	1	
2	Mandrel 軸	1	
3	Bearings 軸承	1	6004
4	Retainer ring 扣環	1	S-20
5	Oil seal 油封	1	22x42x7
6	Retainer ring 扣環	1	R42
7	Woodruff key 半圓鍵	1	3/16" X 7/8"
8	O ring O形環	1	G30
9	O ring O形環	1	G62
10	Front port plate 前分流板	1	
11	Cam ring 凸輪環	1	
12	Locking pin 定位梢	2	Ø6.0X35
13	Rotor 轉子	1	
14	Vane 葉片	12	

項目 ITEM	內容 DESCRIPTION	數量 QUANTITY	附註 REMARKS
15	Rear port plate 後分流板	1	
16	Countersink hex-screw 六角沉頭螺絲	2	M4X0.7X50
17	Dry bearings 無油軸承	1	15x15
18	O ring O形環	1	G80
19	Rear cover 後蓋	1	
20	Countersink hex-screw 六角沉頭螺絲	4	M10x1.5x 85
21	O ring O形環	1	G35
22	Flange 出入口法蘭	1	
23	O ring O形環	1	P22
24	Flange 出入口法蘭	1	
25	Locking pin 定位梢	1	Ø6X12.5
26	Countersink hex-screw 六角沉頭螺絲	4	M10X1.5X30
27	Countersink hex-screw 六角沉頭螺絲	4	M8X12.5X30

DISASSEMBLY FIG 分解圖



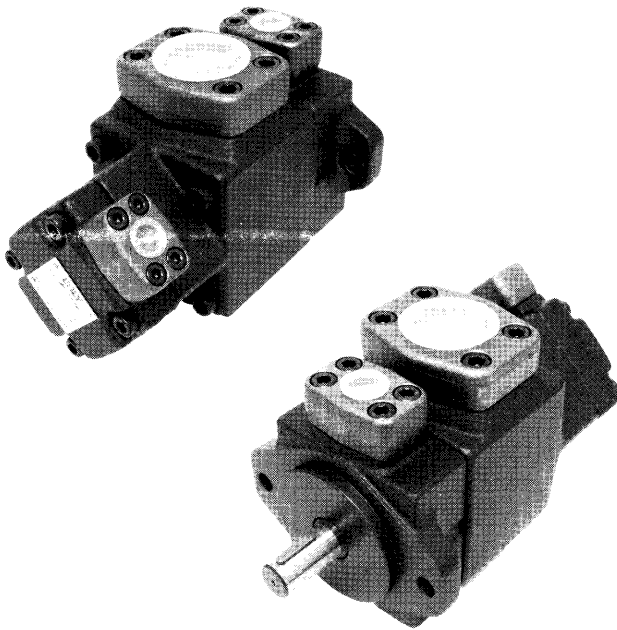
PARTS LIST 零件表-PV2R2

項目 ITEM	內容 DESCRIPTION	數量 QUANTITY	附註 REMARKS
1	邦本體	1	
2	油封	1	30x42x10.5
3	軸	1	
4	軸承	1	6205
5	扣環	1	R52
6	平鍵	1	6.35x6.35x32
7	O形環	1	P46
8	O形環	1	G85
9	前分流板	1	
10	凸輪環	1	
11	定位梢	2	O6.0X45
12	轉子	1	
13	葉片	12	
14	後分流板	1	
15	六角沉頭螺絲	1	M5X0.8X60

項目 ITEM	內容 DESCRIPTION	數量 QUANTITY	附註 REMARKS
16	O形環	1	G105
17	後蓋	1	
18	六角沉頭螺絲	1	M12x1.75x110
19	入口O形環	1	G40
20	入口法蘭	1	A510
21	出口O形環	1	G30
22	出口法蘭	1	A506
23	扣環	1	S-25
24	無油軸承	1	20x20
25	定位梢	1	O6x12.5
26	六角沉頭螺絲	4	M10x1.5x35
27	六角沉頭螺絲	4	M10x1.5x30
28	背托環	1	P46
29	背托環	1	G85

高壓固定容量雙輪葉邦浦 HIGH PRESSURE FIXED DISP. DOUBLE VANE PUMPS

EALY ORBIT
www.ealy-orbit.com



FEATURES:

- These pumps are designed for low noise level and high volumn efficiency.
- Smooth running high stability and durability.
- Inlet resistances are particularly considered in input-port design.
- Maximum working pressure up to 210 kgf/cm²

特點:

- 此邦浦是低噪音、高容積效率設計。
- 運轉圓滑，穩定性高、壽命長。
- 吸入口設計有特殊考慮到其吸入阻抗。
- 最高工作壓力210kgf/cm²。

Series:PV2R12

MODEL 型號	Delivery capacity cover end (c.c/rev) 吐油量-蓋端	Delivery capacity shaft end (c.c/rev) 吐油量-軸端	Mounting 安裝方式	Rotating direction 迴轉方向	Discharge portion (Cover end) 出油口(軸端) PV2R1	Discharge portion (Shaft end) 出油口(軸端) PV2R2	Suction portion 入油口	Design number 設計號碼
PV2R12	- ※	- ※	※	※	※	※	※	- 40
PV2R12	PV2R1	PV2R2	F:Flange 法蘭型	R: CW 正轉	E: Left 45° Upward	A: Upward 上	A: Upward 上	40
	8 12	26 33		L: FOOT 腳座型		L: CCW 反轉	B: Downward 下	
	14 17	38 41	E: 左上 45°		R: Right side 右	R: Right side 右		
	19 23	47 53		L: Left side 左	L: Left side 左			
25 31	59 65							

重量	型號	PV2R12
WEIGHT kgf (lbs) 重量	F: 法蘭型	26.3kg
	L: 腳座型	31.2kg

高壓固定容量雙輪葉邦浦 HIGH PRESSURE FIXED DISP. DOUBLE VANE PUMPS

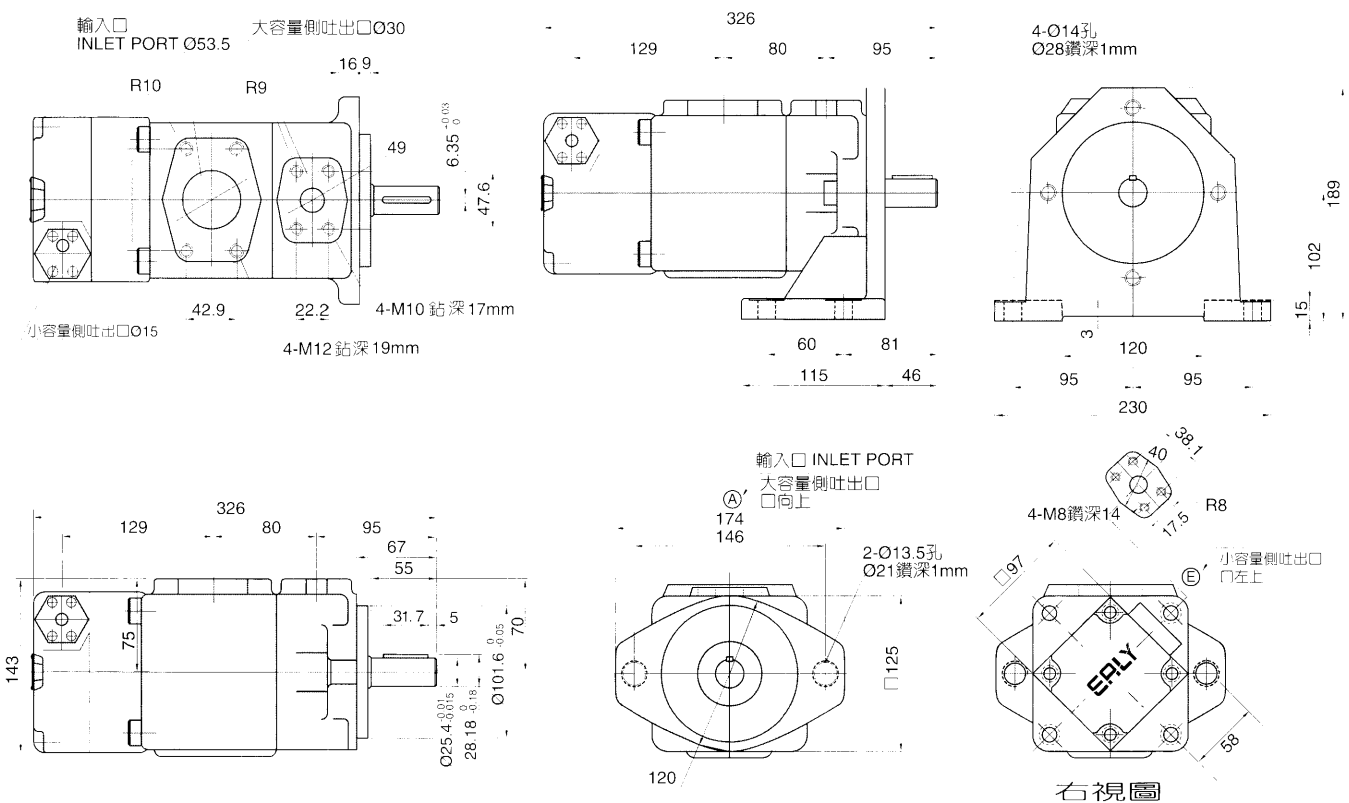
Specification 規格說明

PV2R12(PV2R1+PV2R2)

MODEL CODING 型式號碼	DELIVERY CAPACITY (cc/rev) 吐出能量				MAX.PRESSURE kgf/cm ² 最高壓力	RATED SPEED 額定速度		Flange mounting 出入口法蘭	
	SPEED OF ROTATION (rpm) 迴轉速					MAX. (最高)	MIN. (最低)	OUT (出口)	IN (入口)
	1000	1200	1500	1800					
PV2R1-08	8.1	9.7	12.1	14.6	210	1800	950	1/2"	2"
PV2R1-12	12.2	14.6	18.3	21.9					
PV2R1-14	13.6	17.1	21.5	25.7					
PV2R1-17	16.6	20.5	25.6	30.7					
PV2R1-19	18.6	23.0	28.8	34.5					
PV2R1-23	22.7	27.9	34.9	41.9					
PV2R1-25	25.3	31.3	39.1	46.9					
PV2R1-31	31.0	37.3	46.6	-	175	1500	950		
PV2R2-26	26.2	31.4	39.3	47.1	210	1800	950	3/4"	
PV2R2-33	33.0	38.5	48.1	57.7					
PV2R2-38	38.2	45.8	57.3	68.7					
PV2R2-41	41.3	49.2	61.5	73.8					
PV2R2-47	47.2	57.8	71.4	86.7					
PV2R2-53	52.3	62.7	78.4	94.1					
PV2R2-59	60.2	72.7	90.3	108.3					
PV2R2-65	65.3	78.3	97.9	117.5					

DIMENSIONS 尺寸

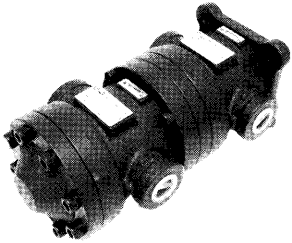
PV2R12



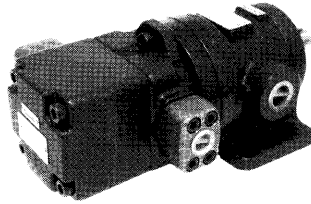
固定容量雙連式輪葉邦浦 FIXED DOUBLE TYPE VANE PUMPS

**EALY
ORBIT**
www.ealy-orbit.com

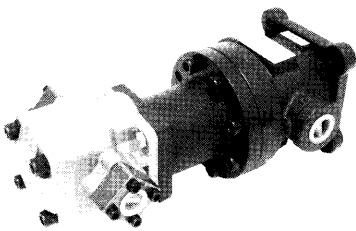
50T+50T



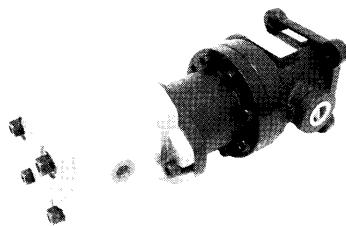
50T+PV2R1



50T+PA



50T+PB



FEATURES:

- This series of pumps provide system design of high flow, low noise level and high volumn efficiency.
- This series of pump can be matched with a low flow gear pump to build into a high-low system and have a function of saving horse power.
- Requires only one single shaft electric motor. Easy the installation work for building a high-low pressure circuit system.

特點:

- 此邦浦是採用大流量、低噪音、高容積效率設計。
- 此系列邦加一個小流量Gear pump組合，可構成高低壓邦、省馬力能力。
- 同一軸心，採用單一電氣馬達安裝配管高低壓迴路系統較為容易。

Series: 50T+(PV2R1.50T.PA.PB)

MODEL 型號	Shaft end (c.c/rew) 軸端	Mounting 安裝方式	Rotating direction 迴轉方向	Discharge portion (Shaft end) 出油口(軸端)	Cover end 蓋端	Delivery capacity (c.c/rew) 吐出量	Shaft end 軸端
50T	- ❖	❖	❖	❖	- ❖	- ❖	- ❖
50T	07 26	F:Flange 法蘭型	R: CW 正轉	R: Right side 右邊	PV2R1	8,12,14,17 19,23,25,31	軸心尺寸固定 Ø 22
	12 30		L: CCW 反轉		L: Left side (normal) 左邊-(規格品)	50T	
	14 36	L: FOOT 腳座型			PA	2~12	X: Ø19.05
	17 40				PB	8~30	10: Ø22
20 43							
23							

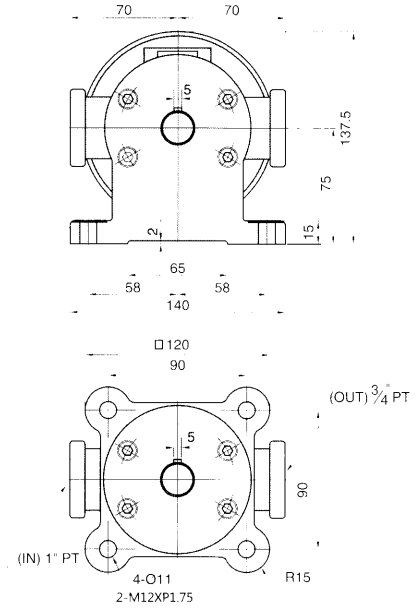
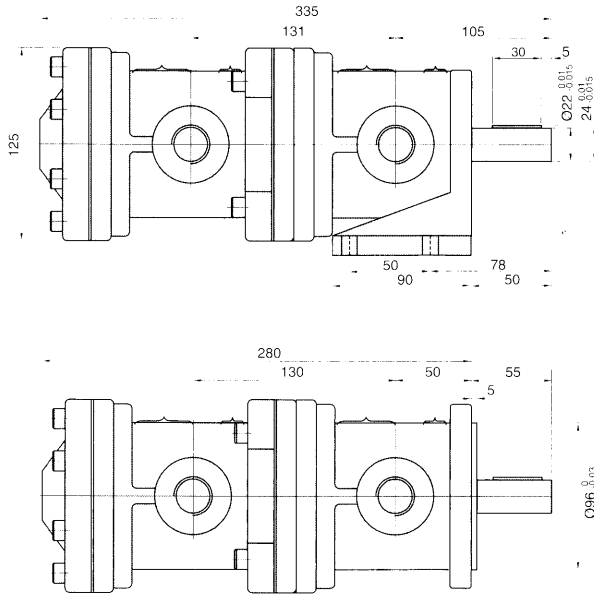
重量	型號	50T+R1	50T+50T	50T+PA	50T+PB
WEIGHT kgf (lbs) 重量	F: 法蘭型	19.5kg	17.9kg	10.2kg	11.7kg
	L: 腳座型	20.4kg	18.9kg	11.2kg	12.7kg

❖ PA.PB重量不含後端齒輪泵

固定容量雙連式輪葉邦浦 FIXED DOUBLE TYPE VANE PUMPS

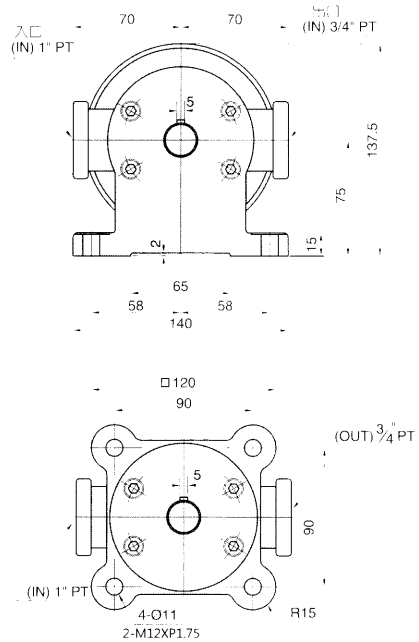
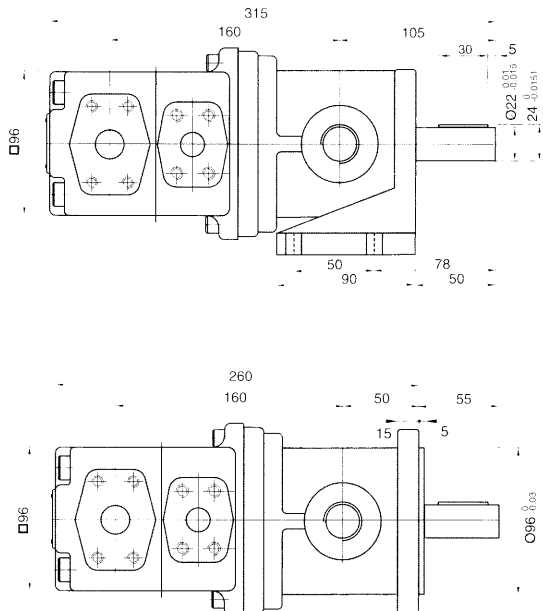
DIMENSIONS 尺寸

50T+50T(低壓雙聯)
規格說明:P30



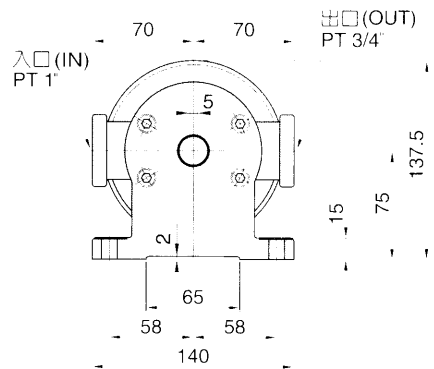
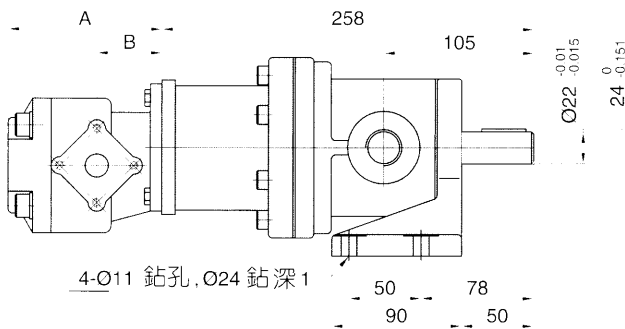
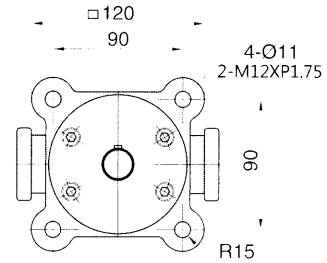
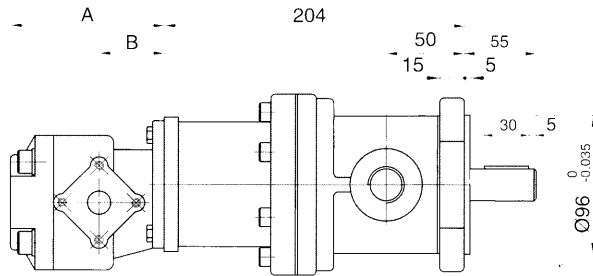
DIMENSIONS 尺寸

50T+PV2R1(高低壓雙聯)
50T規格說明: P30
PV2R1規格說明: P36

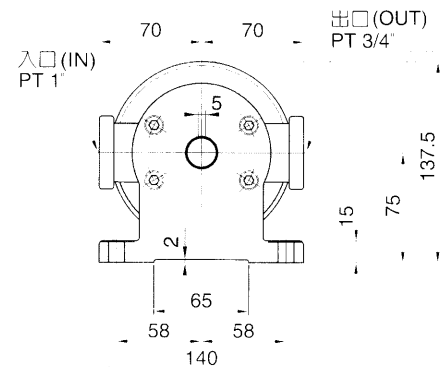
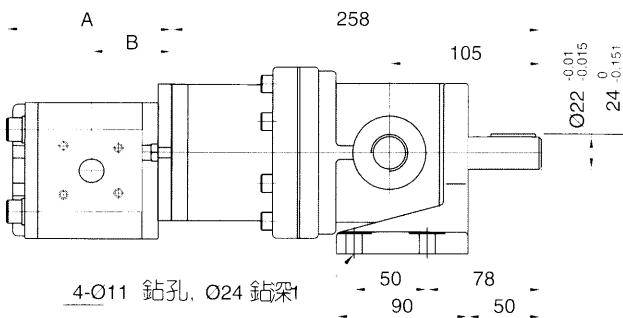
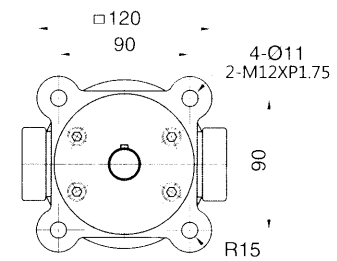
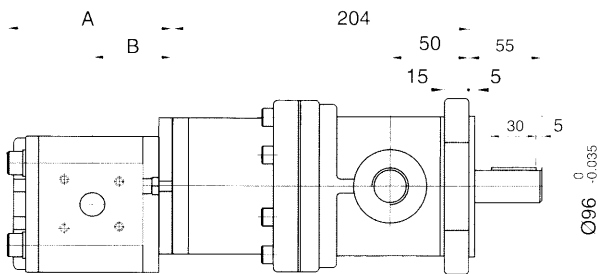


固定容量輪葉邦浦+齒輪邦浦 FIXED VANE PUMPS + GEAR PUMPS

DIMENSIONS 尺寸圖
50T+PA(高低壓雙聯)
規格說明:P30

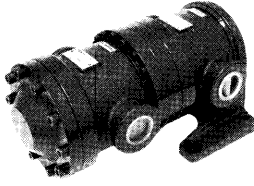


DIMENSIONS 尺寸圖
50T+PB(高低壓雙聯)
規格說明:P30

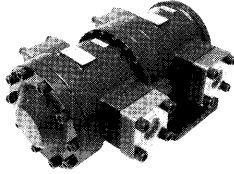


固定容量雙連式輪葉邦浦 FIXED DOUBLE TYPE VANE PUMPS

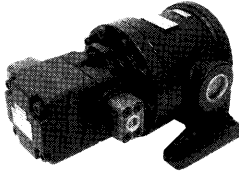
150T+150T



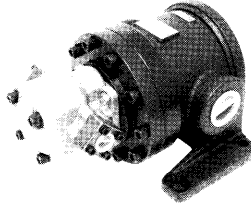
150F+150F



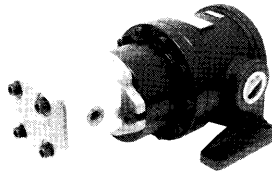
150T+PV2R1
150T+PV2R2



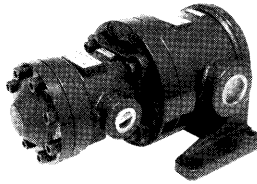
150T+PA



150T+PB



150T+50T



FEATURES:

- This series of pumps provide system design of high flow, low noise level and high volumn efficiency.
- This series of pumps can be matched with a low flow gear pump to build into a high-low system and have a function of saving horse power.
- Requires only one single shaft electric motor. Easy the installation work for building a high-low pressure circuit system.

特點:

- 此邦浦是採用大流量、低噪音、高容積效率設計。
- 此系列邦加一個小流量Gear pump組合，可構成高低壓邦、省馬力功能。
- 同一軸心，採用單一電氣馬達，安裝配管高低壓迴路系統較為容易。

Series: 150T+ ※

MODEL 型號	Shaft end (c.c/rew) 軸端	Mounting 安裝方式	Rotating direction 迴轉方向	Discharge portion (Shaft end) 出油口(軸端)	Cover end 蓋端	Delivery capacity (c.c/rew) 吐出量
150※	- ※	※	※	※	- ※	- ※
150T 出入口接管式	48	F:Flange 法蘭型	R: CW 正轉	R: Right side 右邊	PV2R1	8,12,14,17 19,23,25,31
	61				PV2R2	26,33,38,41 47,53,59,65
150F 出入口法蘭式	75	L: FOOT 腳座型	L: CCW 反轉	L: Left side (normal) 左邊-(規格品)	150T	48,61,75,94,116
	94				50T	07,12,14,17,20,23 26,30,36,40,43
	116				PA	1.07~10.5
	125				PB	8~31.8

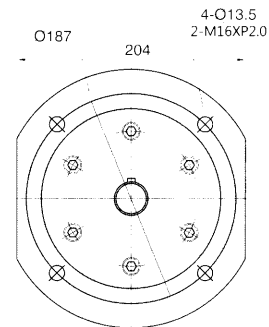
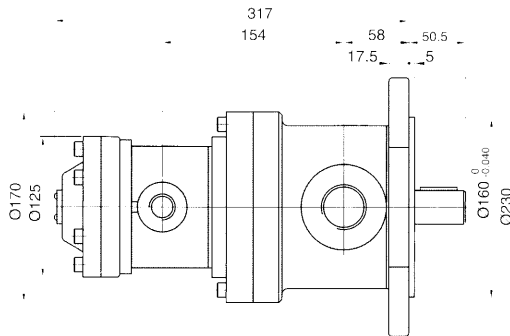
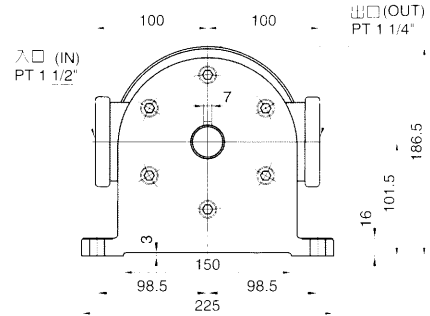
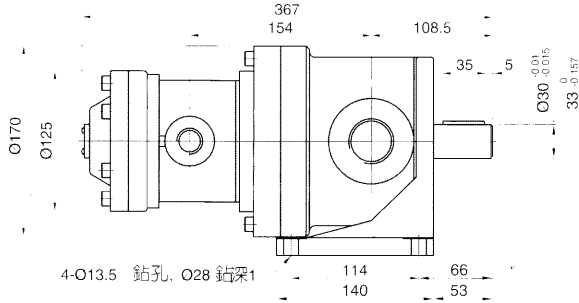
重量	型號	150T+R1	150T+R2	150T+150T	150T+PA	150T+PB
WEIGHT kgf (lbs) 重量		33.6kg	44.5kg	46kg	24.5kg	28.4kg

※ 重量不含後端齒輪泵
 ※ 如須改為150F重量增加3kg (含出入口法蘭重量)
 ※ 150F+150F增加6kg

固定容量雙連式輪葉邦浦 FIXED DOUBLE TYPE VANE PUMPS

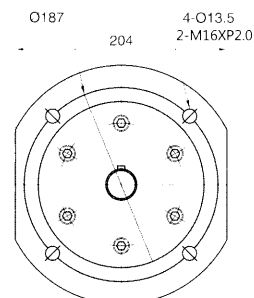
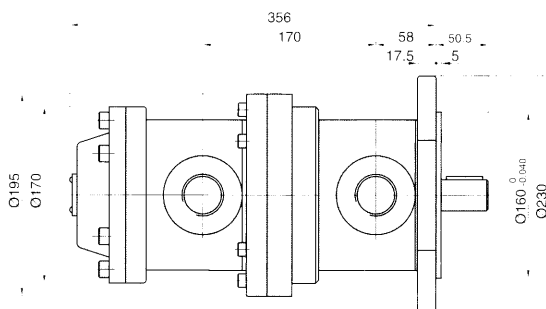
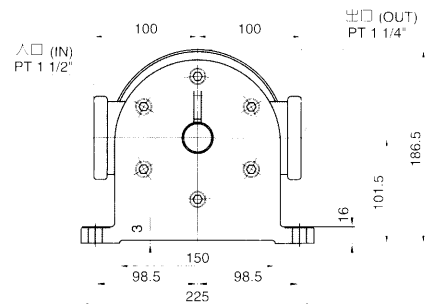
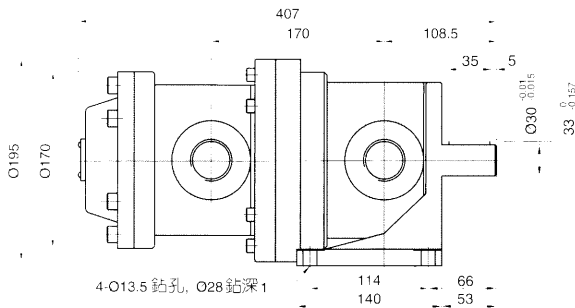
DIMENSIONS 尺寸

150T+50T
規格說明: P30



DIMENSIONS 尺寸

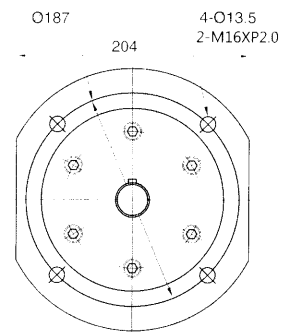
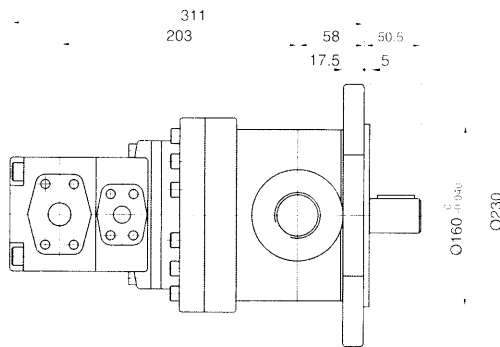
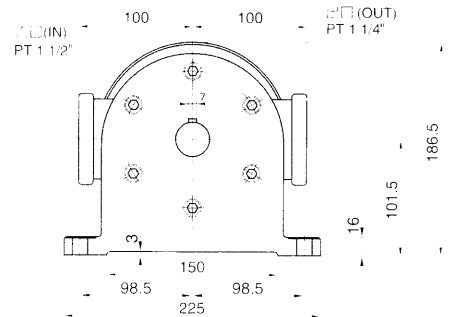
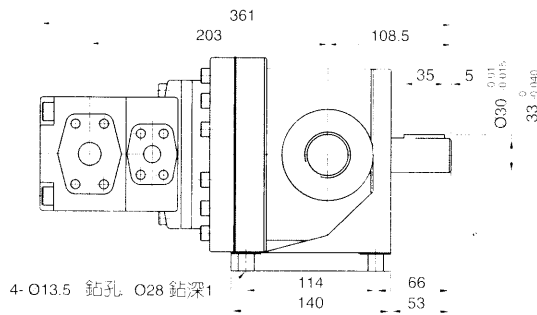
150T+150T
規格說明: P30



固定容量雙連式輪葉邦浦 FIXED DOUBLE TYPE VANE PUMPS

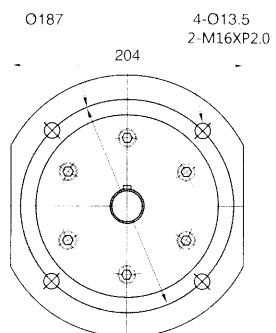
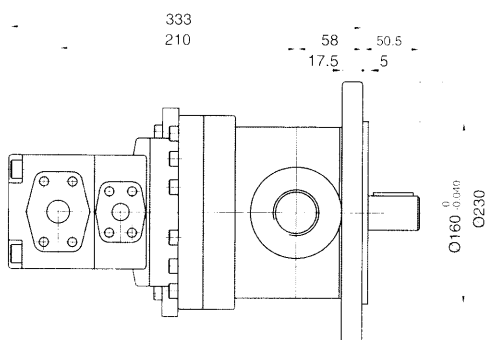
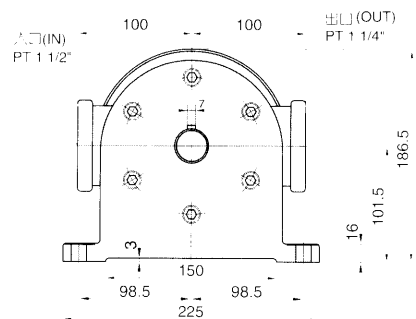
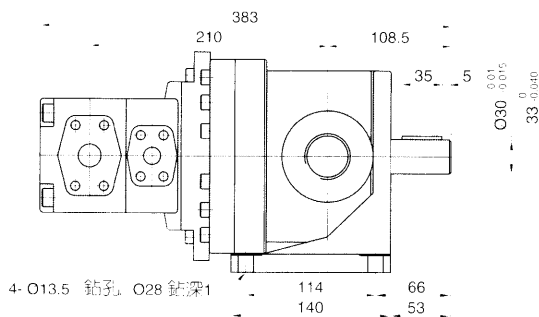
DIMENSIONS 尺寸

150T+PV2R1(高低壓雙聯)
150T 規格說明: P30
PV2R1規格說明: P36



DIMENSIONS 尺寸

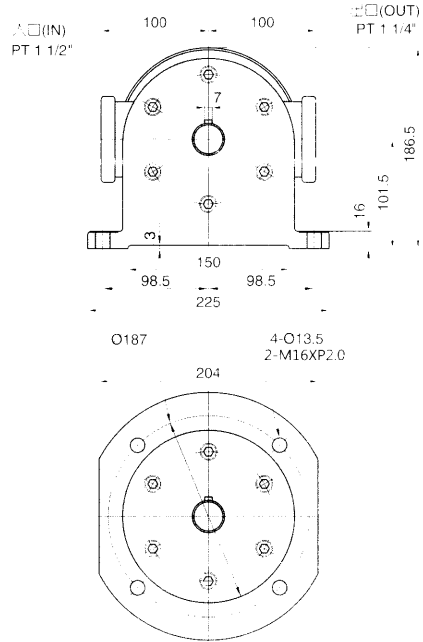
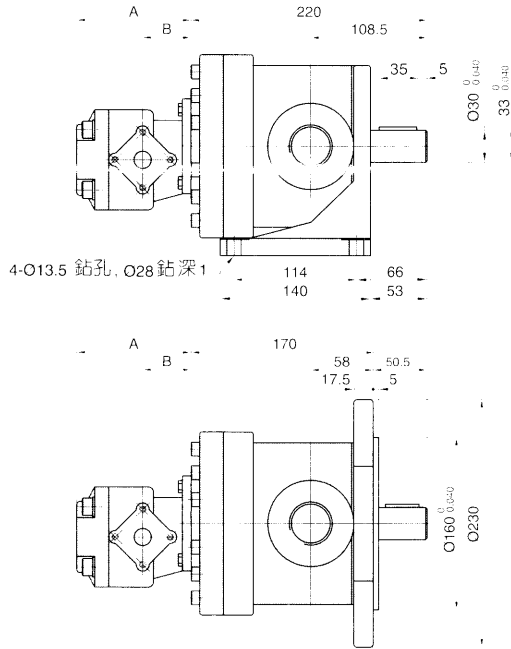
150T+PV2R2(高低壓雙聯)
150T 規格說明: P30
PV2R2規格說明: P36



固定容量輪葉邦浦+齒輪邦浦 FIXED VANE PUMPS + GEAR PUMPS

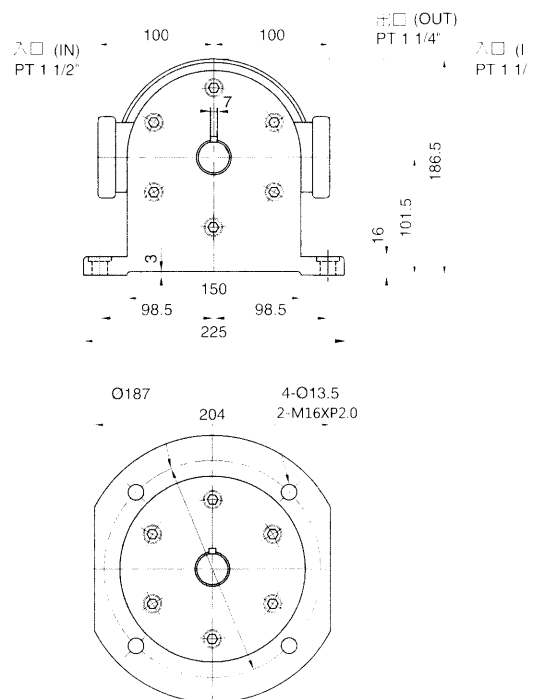
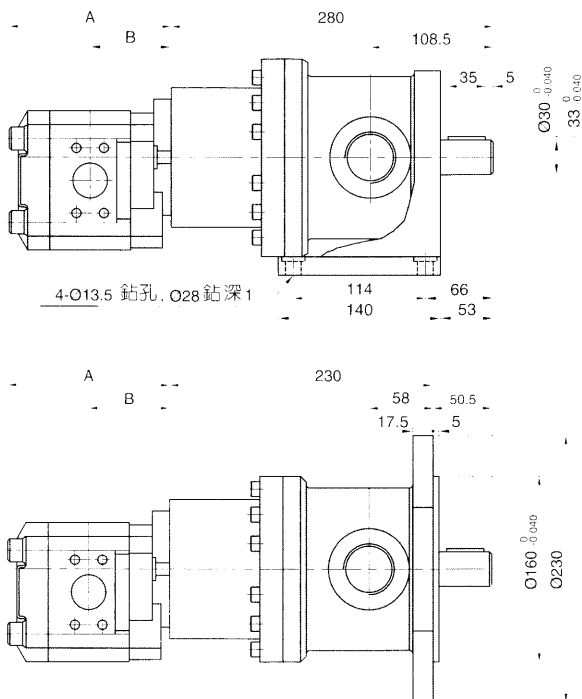
DIMENSIONS 尺寸圖

150T+PA
150T規格說明: P30



DIMENSIONS 尺寸圖

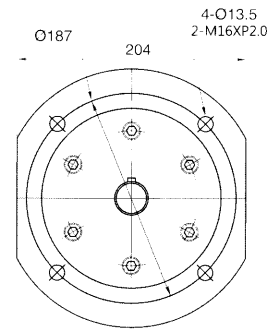
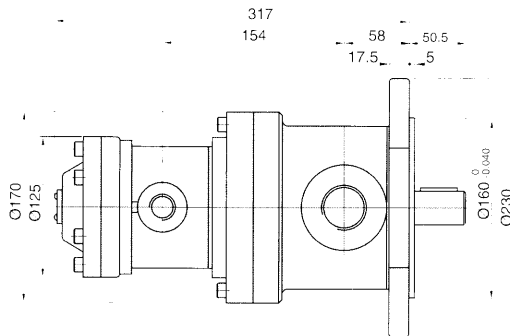
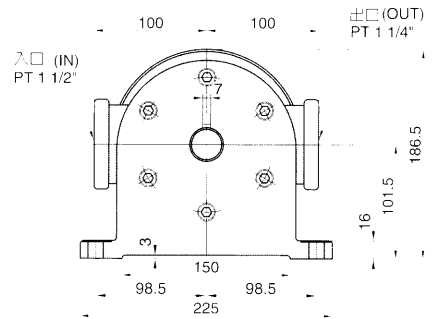
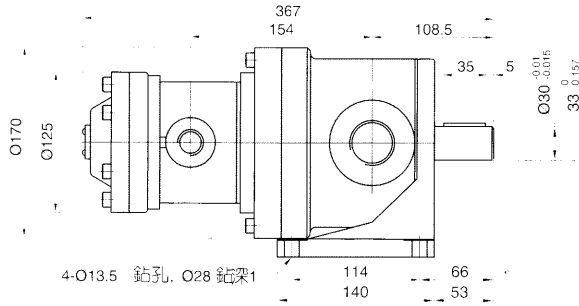
150T+PB
150T規格說明: P30



固定容量雙連式輪葉邦浦 FIXED DOUBLE TYPE VANE PUMPS

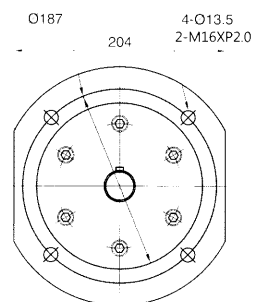
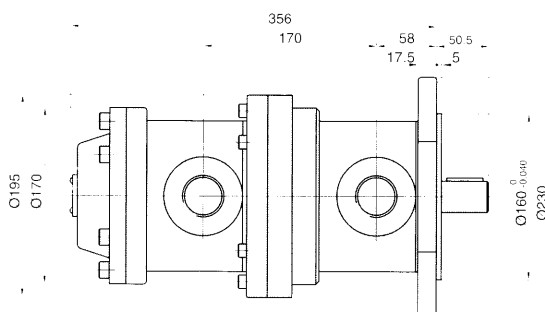
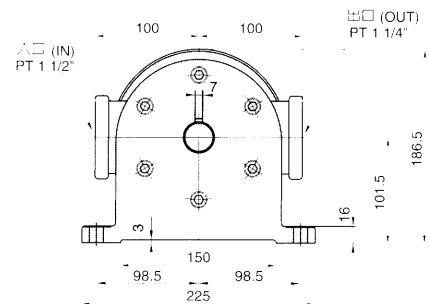
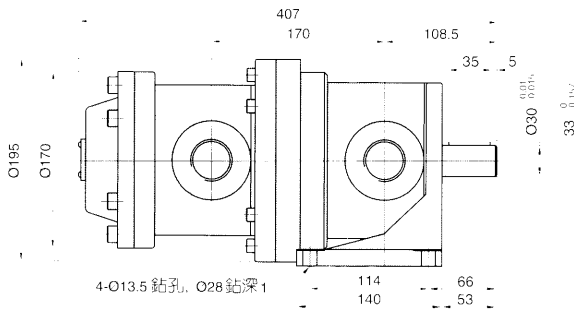
DIMENSIONS 尺寸

150T+50T
規格說明: P30



DIMENSIONS 尺寸

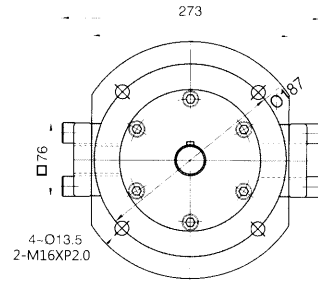
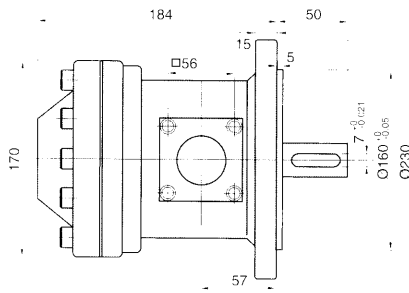
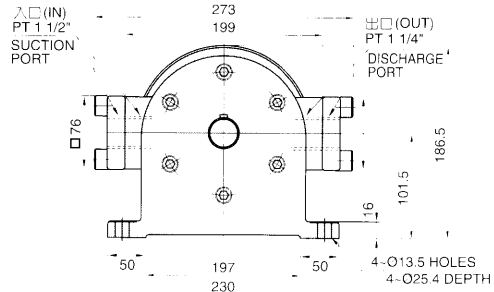
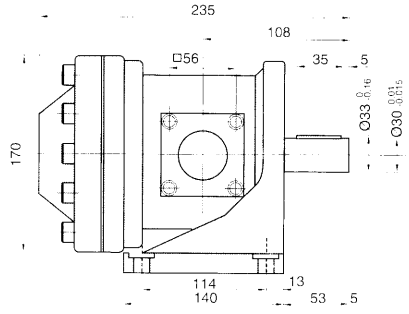
150T+150T
規格說明: P30



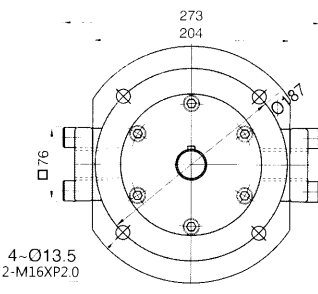
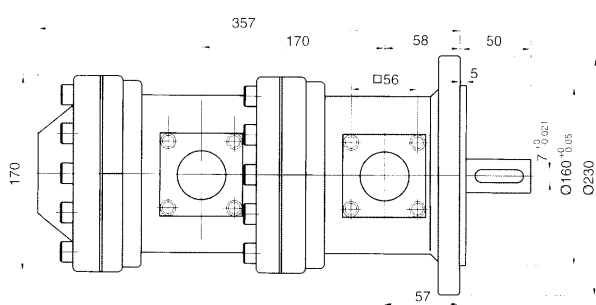
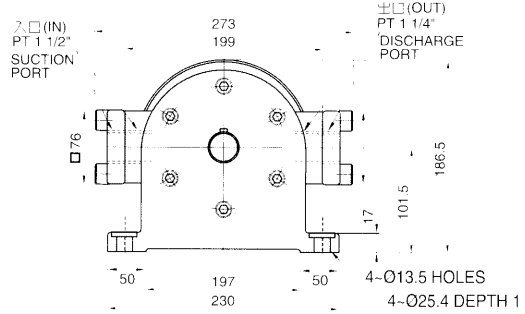
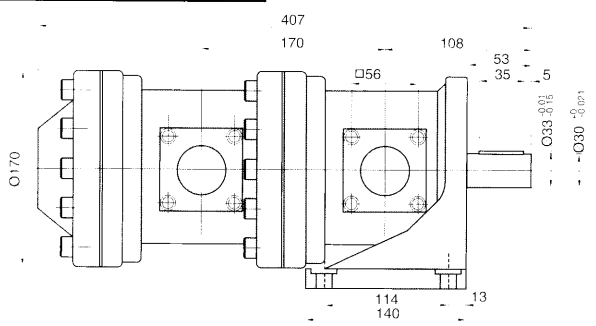
固定容量雙連式輪葉邦浦 FIXED DOUBLE TYPE VANE PUMPS



DIMENSIONS 尺寸圖
 150F-(出入口法蘭型)
 150F規格說明: P30
 出入口法蘭: 選配



DIMENSIONS 尺寸圖
 150F+150F(出入口法蘭型)
 150F規格說明: P30
 出入口法蘭: 選配





EALY 歐利特液壓股份有限公司
ORBIT ORBIT HYDRAULIC CO.,LTD.
www.ealy-orbit.com